

INTRODUCTION TO TOPOLOGY

MARIUS THAULE

VERSION 0.15

2021

1. Introduction

These are lecture notes from the course TMA4190 Introduction to Topology given in the Spring semester 2021 at NTNU. They are intended as a supplement to the lectures and may not be entirely self-contained.

Please send me an [email](#) if you spot any errors!

What is topology?

Topology! The stratosphere of human thought! In the twenty-fourth century it might possibly be of use to someone. . .

— Aleksandr Solzhenitsyn

Topology is a part of mathematics concerned with the study of spaces. In topology, we consider two spaces to be *equivalent* if one can be continuously deformed into the other. Such a continuous deformation is known as a *homeomorphism*, i.e., a continuous bijection with a continuous inverse. See [Figure 1.1](#) for an example of two homeomorphic spaces.

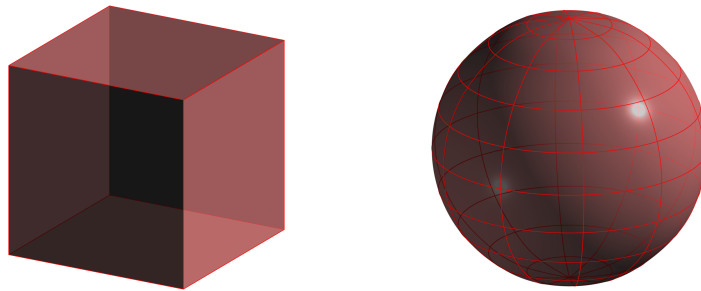


Figure 1.1: The surface of the (unit) cube and the (unit) sphere S^2 are homeomorphic.

We might ask ourselves the following question.

Question Let X and Y be two spaces. Does there exist a homeomorphism $\varphi: X \rightarrow Y$? In other words, are X and Y homeomorphic?

Showing that two spaces are homeomorphic involves the construction of a specific homeomorphism between them. Proving that two spaces are *not* homeomorphic is a problem of a different nature. It is a hopeless exercise to check every possible map between the two spaces for whether or not it is a homeomorphism. Instead we might check to see whether there is some “topological invariant” of spaces (where this invariant is preserved under a homeomorphism) that allows us to differentiate between the two spaces.

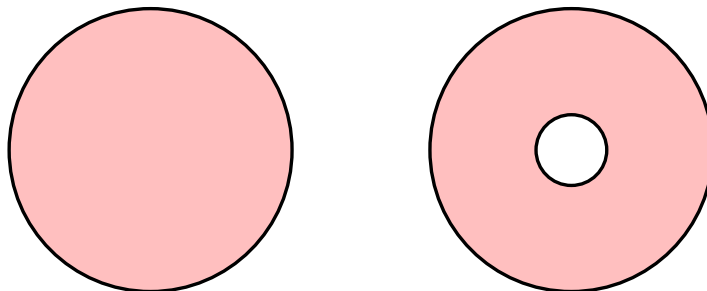


Figure 1.2: The disc D^2 and the annulus are not homeomorphic.

One instrument to help us detect topological information of a space is the *fundamental group* associated to the space. It is reasonable to expect that the disc D^2 and the annulus are not homeomorphic. The annulus has a hole through it while the disc does not, see [Figure 1.2](#).

To detect the hole through the annulus we may use loops, i.e., continuous maps from the unit interval to the annulus with the endpoints identified. See [Figure 1.3](#).

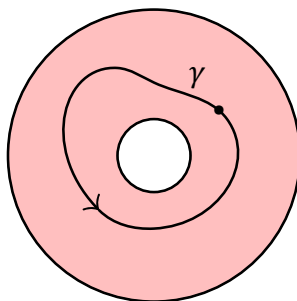


Figure 1.3: A loop.

It is then possible to construct a *group* involving such loops. This group is what is known as the fundamental group.

Some applications

To help illustrate some of the power of topology, let us consider two theorems, both of which may be proved using topology and more specifically, the fundamental group.

The first theorem is the Brouwer fixed point theorem.

Theorem 1.1 (Brouwer fixed point theorem) *Let $f: D^n \rightarrow D^n$ be a continuous map from the (unit) disk in \mathbb{R}^n to itself. Then f has a fixed point, i.e., there is some point $x \in D^n$ such that $f(x) = x$.*

For $n = 1$ this is a well-known result from calculus: The graph of any continuous map $f: [0, 1] \rightarrow [0, 1]$ must cross the diagonal $y = x$ for some $x_* \in [0, 1]$. Hence, $f(x_*) = x_*$. See [Figure 1.4](#).

The second theorem is the fundamental theorem of algebra.

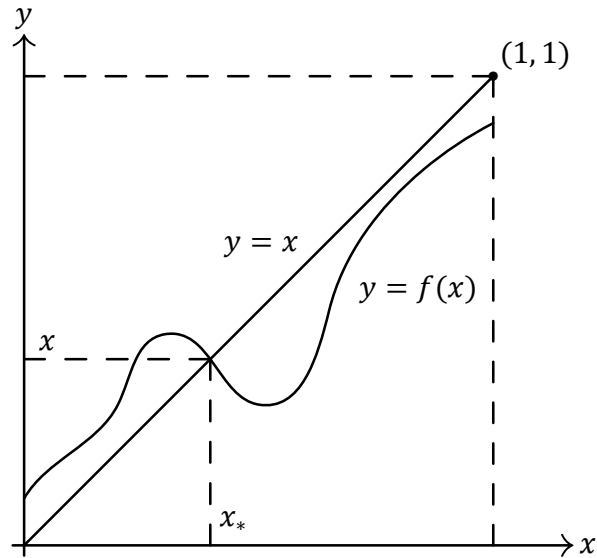


Figure 1.4: The graph of any continuous map from $[0, 1]$ to $[0, 1]$ must cross the diagonal.

Theorem 1.2 (The fundamental theorem of algebra) *A polynomial equation*

$$z^n + a_{n-1}z^{n-1} + \cdots + a_1z + a_0 = 0$$

of degree $n > 0$ with complex coefficients has at least one complex root.

To prove it we will use the fact that the fundamental group of the circle is isomorphic to the group of integers. The fundamental theorem of algebra may be proved in many different ways, including using only algebraic techniques and analysis. However, the proof we will provide (based on [3]) is a fairly simple corollary of the computation of the fundamental group of the circle.

2. Continuous maps

2.1 Metric spaces

From calculus we know what to mean by a continuous map from \mathbb{R}^n to \mathbb{R}^m : a map $f: \mathbb{R}^n \rightarrow \mathbb{R}^m$ is *continuous* at $p \in \mathbb{R}^n$ if for all $\epsilon > 0$ there exists a $\delta > 0$ such that if $\|p - q\|_{\mathbb{R}^n} < \delta$, then $\|f(p) - f(q)\|_{\mathbb{R}^m} < \epsilon$. Here $\|\cdot\|_{\mathbb{R}^n}$ denotes the Euclidean norm in \mathbb{R}^n . Similarly, $\|\cdot\|_{\mathbb{R}^m}$ denotes the Euclidean norm in \mathbb{R}^m .

Topological spaces provide the most general setting for which the concept of continuity makes sense. Before we get to the concept of a topological space, let us consider metric spaces. Metric spaces allow us to speak of distance between elements. Using the notion of distance between elements we can make sense of continuity of maps between metric spaces.

Definition 2.1 (Metric spaces) A *metric space* (X, d) is a non-empty set X together with a map $d: X \times X \rightarrow \mathbb{R}$ called a *metric* such that the following properties hold:

- M1** $d(x, y) \geq 0$ for all $x, y \in X$, and $d(x, y) = 0$ if and only if $x = y$;
- M2** $d(x, y) = d(y, x)$ for all $x, y \in X$;
- M3** $d(x, z) \leq d(x, y) + d(y, z)$ for all $x, y, z \in X$.

The first condition says that the distance between two elements is always positive, and equal to zero if and only if the two elements are the same. The second condition says that distance is symmetric. The third condition says that the *triangle inequality* holds. The metric d is sometimes also referred to as a distance function.



Example 2.2 (\mathbb{R}^n seen as a metric space) Let $X = \mathbb{R}$ and d be the map defined by $d(x, y) = |x - y| (= \sqrt{(x - y)^2})$. The first two requirements for d are clearly satisfied, and the third follows from the usual triangle inequality for real numbers,

$$d(x, z) = |x - z| = |(x - y) + (y - z)| \leq |x - y| + |y - z| = d(x, y) + d(y, z).$$

For $X = \mathbb{R}^n$ with $n > 0$ an integer, let $d(x, y) = \|x - y\|$ where $\|\cdot\|$ is the Euclidean norm, e.g., for $n = 2$, $d(x, y) = \|x - y\| = \sqrt{(x_1 - y_1)^2 + (x_2 - y_2)^2}$. Again, the first two requirements for d are clearly satisfied. The third requirement follows from the triangle inequality for vectors in \mathbb{R}^n .

We may equip \mathbb{R}^n with other metrics than the one described in [Example 2.2](#). For instance, for $X = \mathbb{R}^2$, let

$$d(x, y) = |x_1 - y_1| + |x_2 - y_2|.$$

This is known as the *taxi cab metric*.

We say that two metrics d_1 and d_2 on the same set X are *equivalent* if there exist constants L and M such that

$$d_1(x, y) \leq Ld_2(x, y) \quad \text{and} \quad d_2(x, y) \leq Md_1(x, y)$$

for all $x, y \in X$.

Example 2.3 (Discrete metric spaces) For any set X , let $d: X \times X \rightarrow \mathbb{R}$ be the map given by

$$d(x, y) = \begin{cases} 1 & x \neq y, \\ 0 & x = y. \end{cases}$$

We call d the *discrete metric* on X .

Example 2.4 ($C[a, b]$) Let $X = C[a, b]$, i.e., the set of continuous maps from the interval $I = [a, b] \subseteq \mathbb{R}$ to \mathbb{R} , and let

$$d(x, y) = \max_{i \in I} |x(i) - y(i)|.$$

Example 2.5 If d is a metric on a set X , and $A \subseteq X$ is any subset of X , then d is also a metric on A .

2.2 Continuous maps between metric spaces

The definition of continuity of maps between metric spaces is completely analogous to the situation that we have from calculus.

Definition 2.6 (Continuous maps between metric spaces) Let (X, d_X) and (Y, d_Y) be two metric spaces. A map $f: X \rightarrow Y$ is *continuous* at $p \in X$ if for all $\epsilon > 0$ there is a $\delta > 0$ such that if $d_X(p, q) < \delta$ then $d_Y(f(p), f(q)) < \epsilon$.

If f is continuous at every $p \in X$, we say that f is *continuous*.

To get us to the setting of topological spaces we will need the concept of *open* and *closed* sets.

Definition 2.7 (Open and closed balls) Let (X, d) be a metric space, and let $a \in X$ and $r > 0$ be real number. The *open ball* centered at a with radius r is the subset

$$B(a; r) = \{x \in X \mid d(x, a) < r\}$$

of X . The *closed ball* centered at a with radius r is the subset

$$\bar{B}(a; r) = \{x \in X \mid d(x, a) \leq r\}$$

of X .

In Euclidean space with the usual metric (induced from Euclidean norm), a ball (as defined above) is precisely what we think of as a ball in everyday language. Open balls are sometimes referred to as

simply balls, and closed balls are sometimes referred to as discs, e.g. [Theorem 1.1](#).

Example 2.8 (Open balls in discrete metric spaces) Let (X, d) be the metric space defined in [Example 2.3](#). Then

$$B(x; r_1) = \{x\} \quad \text{and} \quad B(x; r_2) = X$$

for all $0 < r_1 \leq 1$ and all $r_2 > 1$.

Definition 2.9 (Open and closed sets) Let (X, d) be a metric space. A subset $A \subseteq X$ is *open* in X if for every point $a \in A$, there is an open ball $B(a; r)$ about a contained in A . We say that A is *closed* in X if the complement $A^c = X \setminus A = \{x \in X \mid x \notin A\}$ is open.

Most subsets are *neither* open nor closed. Subsets that are both open and closed are sometimes referred to as *clopen*. In particular, both \emptyset and X are clopen in X .



Lemma 2.10 Let (X, d) be a metric space, $x \in X$ and $r > 0$ a real number. Then the open ball $B(x; r) \subseteq X$ is open in X , and the closed ball $\bar{B}(x; r) \subseteq X$ is closed in X .

Proof. We prove the statement about open balls. The statement about closed balls follows from a similar argument.

Assume that $y \in B(x; r)$. We need to prove that there is an open ball $B(y; \epsilon)$ about y that is contained in $B(x; r)$. Let $\epsilon = r - d(x, y)$. By the triangle inequality of the metric d , [M3](#), we have that for $z \in B(y; \epsilon)$,

$$d(x, z) \leq d(x, y) + d(y, z) < d(x, y) + \epsilon = d(x, y) + r - d(x, y) = r.$$

Hence, $B(y; \epsilon) \subseteq B(x; r)$. □

For a metric space (X, d) , a subset $A \subseteq X$ and $x \in X$, we say that: (i) x is an *interior point* of A if there is an open ball $B(x; r)$ about x which is contained in A , (ii) x is an *exterior point* of A if there is an open ball $B(x; r)$ which is contained in A^c and (iii) x is a *boundary point* if all open balls about x contains points in A and in A^c . Hence, A is open in X if and only if A only consists of its interior points. An interior point will *always* belong to A . An exterior point will *never* belong to A . A boundary point will some times belong to A , and some times to A^c .

Definition 2.11 (Neighborhoods) Let (X, d) be a metric space, A a subset of X and $x \in X$. We say that A is a *neighborhood* of x if there is an open ball about x that is contained in A . We say that A is an *open neighborhood* (of x) if A itself is open.

Theorem 2.12 (Continuity at a point) Let (X, d_X) and (Y, d_Y) be two metric spaces, and let $p \in X$. A map $f: X \rightarrow Y$ is continuous at p if and only if for all neighborhoods B of $f(p)$, there is a neighborhood A of p such that $f(A) \subseteq B$.

Proof. Assume that f is continuous at p . If B is a neighborhood of $f(p)$, then, by definition, there is an open ball $B_Y(f(p); \epsilon)$ about $f(p)$ that is contained in B . Since f is continuous at p , there is a

$\delta > 0$ such that if $d_X(p, q) < \delta$, then $d_Y(f(p), f(q)) < \epsilon$. Hence, $f(B_X(p; \delta)) \subseteq B_Y(f(p); \epsilon) \subseteq B$. That is, if we let $A = B_X(p, \delta)$, then for all neighborhoods B of $f(p)$, we have that $f(A) \subseteq B$ where A is a neighborhood of p .

Assume that for all neighborhoods B of $f(p)$, there is a neighborhood A of p such that $f(A) \subseteq B$. We need to prove that for all $\epsilon > 0$, there is a $\delta > 0$ such that if $d_X(p, q) < \delta$, then $d_Y(f(p), f(q)) < \epsilon$. By utilizing the fact that $B = B_Y(f(p); \epsilon)$ is a neighborhood of $f(p)$, then, by assumption, there must be a neighborhood A of p such that $f(A) \subseteq B$. Since A is a neighborhood of p , there is an open ball $B_X(p; \delta)$ about p that is contained in A . Now assume that $d_X(p, p') < \delta$. Then $p' \in B_X(p; \delta) \subseteq A$. Thus $f(p') \in B = B_Y(f(p); \epsilon)$, and hence, $d_Y(f(p), f(p')) < \epsilon$. Thus f is continuous at p . \square

The following theorem gives an alternative description of continuous maps between metric spaces.

Theorem 2.13 (Continuous maps between metric spaces) Let (X, d_X) and (Y, d_Y) be two metric spaces. A map $f: X \rightarrow Y$ is continuous if and only if for every subset $B \subseteq Y$ open in Y , the preimage of B under f ,

$$f^{-1}(B) = \{x \in X \mid f(x) \in B\} \subseteq X,$$

is open in X .

Proof. Assume that f is continuous. For $B \subseteq Y$ open in Y , we have to prove that $f^{-1}(B) \subseteq X$ is open in X . Let $a \in f^{-1}(B)$. We want to prove that there is an open ball about a in X that is contained in $f^{-1}(B)$. By assumption, $B \subseteq Y$ is open in Y . Hence, there is an $\epsilon > 0$ such that $B_Y(f(a); \epsilon) \subseteq B$. From the assumption that f is continuous there is a $\delta > 0$ such that $B_X(a; \delta) \subseteq f^{-1}(B_Y(f(a); \epsilon)) \subseteq f^{-1}(B)$.

We now prove the opposite implication. Assume that for every subset $B \subseteq Y$ open in Y , the preimage $f^{-1}(B)$ of B under f is open in X . Let $a \in X$ and $\epsilon > 0$ be a real number. From the first assumption it follows that $f^{-1}(B_Y(f(a); \epsilon)) \subseteq X$ is open in X . As $f^{-1}(B_Y(f(a); \epsilon))$ is open and contains a , there is a $\delta > 0$ such that $B_X(a; \delta) \subseteq f^{-1}(B_Y(f(a); \epsilon))$. Thus $x \in B_X(a; \delta)$ implies that $f(x) \in B_Y(f(a); \epsilon)$. Hence, $f: X \rightarrow Y$ is continuous. \square



Let A and B be sets, and let $f: A \rightarrow B$. Then $f^{-1}(B)$ will always exist even if there is no inverse map. In the cases where f has an inverse there is no ambiguity. If U and V are both subsets of B then

$$f^{-1}(U \cup V) = f^{-1}(U) \cup f^{-1}(V) \quad \text{and} \quad f^{-1}(U \cap V) = f^{-1}(U) \cap f^{-1}(V),$$

and furthermore, if $U \subseteq V$ then $f^{-1}(U) \subseteq f^{-1}(V)$. Let $U \subseteq A$ and $V \subseteq B$, then

$$U \subseteq f^{-1}(f(U)) \quad \text{and} \quad f(f^{-1}(V)) \subseteq V.$$

We also note that if U is a subset of B then

$$f^{-1}(B \setminus U) = f^{-1}(U^c) = (f^{-1}(U))^c = A \setminus f^{-1}(U).$$

2.3 Exercises

Exercise 2.1 Does $d(x, y) = (x - y)^2$ define a metric on $X = \mathbb{R}$?

Exercise 2.2 Show that \mathbb{R}^2 equipped with the taxi cab metric is a metric space.

Exercise 2.3 Let (X, d) be a metric space. Show that the map $d' : X \times X \rightarrow \mathbb{R}$ given by

$$d'(x, y) = \frac{d(x, y)}{1 + d(x, y)}$$

is also a metric on X .

Exercise 2.4 Draw a picture of the open ball $B((0, 0); 1)$ in the metric space (\mathbb{R}^2, d) with

- (a) $d(x, y) = d_1(x, y) = |x_1 - y_1| + |x_2 - y_2|$;
- (b) $d(x, y) = d_2(x, y) = \sqrt{(x_1 - y_1)^2 + (x_2 - y_2)^2}$;
- (c) $d(x, y) = d_\infty(x, y) = \max\{|x_1 - y_1|, |x_2 - y_2|\}$.

Exercise 2.5 Show that d_1, d_2 and d_∞ (as defined in [Exercise 2.4](#)) are equivalent on $X = \mathbb{R}^2$.

Exercise 2.6 Show that in a discrete metric space (X, d) , cf. [Example 2.3](#), every subset is both open and closed in X .

Exercise 2.7 Show that for equivalent metrics d and d' on the set X , the open sets are the same.

Exercise 2.8 Let (X, d_X) and (Y, d_Y) be metric spaces, and let $f : X \rightarrow Y$ be a map. Show that f is continuous if and only if for every subset $B \subseteq Y$ closed in Y , the preimage $f^{-1}(B)$ is closed in X .

3. Topological spaces

3.1 Definition and examples

Topological spaces are spaces constructed to support continuous maps. The definition is as follows.

Definition 3.1 (Topological spaces) A *topological space* is a set X together with a collection \mathcal{T} of subsets of X that are called *open* in X , such that the following properties hold.

- T1** The subsets \emptyset and X are in \mathcal{T} .
- T2** The union of the elements of any subcollection of \mathcal{T} is in \mathcal{T} .
- T3** The intersection of the elements of any finite subcollection of \mathcal{T} is in \mathcal{T} .



A topological space is strictly speaking an ordered pair (X, \mathcal{T}) . We refer to \mathcal{T} as the *topology* on X . We will often omit specific mention of \mathcal{T} if no confusion will arise.

The following theorem states that every metric space (X, d) is a topological space with the *metric topology* \mathcal{T}_d on X .

Theorem 3.2 (Metric spaces are topological spaces) Let (X, d) be a metric space. Let \mathcal{T}_d be the collection of subsets $U \subseteq X$ with the property that $U \in \mathcal{T}_d$ if and only if for each $x \in U$ there is an $r > 0$ such that $B(x; r) \subseteq U$. Then \mathcal{T}_d defines a topology on X .

Proof. Clearly, $\emptyset \in \mathcal{T}_d$. To show that $X \in \mathcal{T}_d$, note that for any $x \in X$, $B(x; 1) \subseteq X$. Hence, $X \in \mathcal{T}_d$. Thus **T1** is satisfied.

Let $\{U_\lambda\}_{\lambda \in \Lambda}$ be any subcollection of \mathcal{T}_d . We need to prove that $V = \bigcup_{\lambda \in \Lambda} U_\lambda \in \mathcal{T}_d$. Let $x \in V$. From $V = \bigcup_{\lambda \in \Lambda} U_\lambda$ there is $\lambda \in \Lambda$ such that $x \in U_\lambda$. By the property of U_λ satisfied by the U_λ in \mathcal{T}_d there is an $r > 0$ such that $B(x; r) \subseteq U_\lambda$. Hence, $B(x; r) \subseteq V$. Thus $V \in \mathcal{T}_d$, and **T2** is satisfied.

We prove that the intersection of two elements of \mathcal{T}_d is also an element of \mathcal{T}_d . The general result then follows by an induction argument. Let $U_1, U_2 \in \mathcal{T}_d$. We need to prove that $U_1 \cap U_2 \in \mathcal{T}_d$. Let $x \in U_1 \cap U_2$. Since $U_1 \cap U_2 \subseteq U_i$, we have that $x \in U_i$ for $i = 1, 2$. By the defining property of \mathcal{T}_d there is an $r_i > 0$ such that $B(x; r_i) \subseteq U_i$ for $i = 1, 2$. Let $r = \min\{r_1, r_2\}$. Then $B(x; r) \subseteq B(x; r_i) \subseteq U_i$ for $i = 1, 2$. Thus $B(x; r) \subseteq U_1 \cap U_2$, and so $U_1 \cap U_2 \in \mathcal{T}_d$. Hence, **T3** is satisfied. \square

The following theorem relates the metric topologies for two equivalent metrics.

Theorem 3.3 Let X be any set, and let d_1 and d_2 be two equivalent metrics on X . Then $\mathcal{T}_{d_1} = \mathcal{T}_{d_2}$.

This follows from [Exercise 2.7](#).

Example 3.4 (Discrete topology) Let X be any set. The collection \mathcal{T} of all subsets of X , i.e. the power set $\mathcal{P}(X)$ of X , is a topology on X . We refer to this topology as the *discrete topology*. A set X equipped with the discrete topology is referred to as a *discrete topological space*.

The discrete topology is the unique topology where the singletons are open. We can think of a discrete topological space as a space of separate, isolated points, with no close interaction between different points.

For any set X , the discrete topology is the largest topology we may equip X with. The smallest topology is called the indiscrete topology.

Example 3.5 (Indiscrete topology) Let X be any set. The collection \mathcal{T} consisting of \emptyset and X is a topology on X , referred to as the *indiscrete topology* on X . A set X equipped with the indiscrete topology is referred to as an *indiscrete topological space*.

Example 3.6 Let $X = \{a, b, c\}$. The following collections all define a topology on X .

- (1) $\mathcal{T}_1 = \mathcal{T}_{\text{ind}} = \{\emptyset, X\}$
- (2) $\mathcal{T}_2 = \{\emptyset, \{a\}, X\}$
- (3) $\mathcal{T}_3 = \{\emptyset, \{a, b\}, X\}$
- (4) $\mathcal{T}_4 = \{\emptyset, \{a\}, \{a, b\}, X\}$
- (5) $\mathcal{T}_5 = \{\emptyset, \{a, b\}, \{b\}, \{b, c\}, X\}$
- (6) $\mathcal{T}_6 = \mathcal{T}_{\text{disc}} = \mathcal{P}(X) = \{\emptyset, \{a\}, \{a, b\}, \{a, c\}, \{b\}, \{b, c\}, \{c\}, X\}$

There are in total 29 topologies on X . However, there are also collections of subsets of X which do not define topologies on X . None of the following collections of subsets of X define a topology on X .

- (1) $\{\emptyset, \{a\}, \{b\}, X\}$
- (2) $\{\emptyset, \{a\}, \{c\}, X\}$
- (3) $\{\emptyset, \{a, b\}, \{b, c\}, X\}$

Definition 3.7 (Comparable topologies) Let X be any set and suppose that \mathcal{T}_1 and \mathcal{T}_2 are two topologies on X . If $\mathcal{T}_1 \subseteq \mathcal{T}_2$, we say that \mathcal{T}_1 is *coarser* than \mathcal{T}_2 and that \mathcal{T}_2 is *finer* than \mathcal{T}_1 . We say that \mathcal{T}_1 and \mathcal{T}_2 are *comparable* if either $\mathcal{T}_1 \subseteq \mathcal{T}_2$ or $\mathcal{T}_2 \subseteq \mathcal{T}_1$.

Clearly, for any set X , the discrete topology $\mathcal{T}_{\text{disc}}$ contains the indiscrete topology \mathcal{T}_{ind} : $\mathcal{T}_{\text{disc}} \supseteq \mathcal{T}_{\text{ind}}$. Hence, the discrete topology is finer than the indiscrete topology and the indiscrete topology is coarser than the discrete topology.

Example 3.8 (Cofinite topology) Let X be any set. The collection \mathcal{T} of subsets of X consisting of subsets $U \subseteq X$ such that $U^c = X \setminus U$ is either finite or all of X is a topology on X . We refer to this topology as the *cofinite topology* on X .

If X is a finite set, the cofinite topology is equal to the discrete topology. If X is an infinite set, the cofinite topology is *strictly coarser* than the discrete topology, in the sense that the cofinite topology is properly contained in the discrete topology.

We end this section with a theorem that we can use to prove that some set is open. To state the theorem we need the following definition.

Definition 3.9 (Neighborhoods) Let X be a topological space, U a subset of X and $x \in X$. We say that U is a *neighborhood of x* if $x \in U$ and U is open in X .

A neighborhood in the sense of the previous definition is sometimes referred to as an *open neighborhood*, cf. [Definition 2.11](#).

Theorem 3.10 Let X be a topological space. A subset U of X is open in X if and only if for every $x \in U$ there is a neighborhood U_x of x such that $U_x \subseteq U$.

Proof. Assume that U is open in X . Then for every $x \in U$, U is a neighborhood of x that is contained in U .

We prove the other implication. Assume that for every $x \in U$ there is a $U_x \in \mathcal{T}$ such that $x \in U_x \subseteq U$, i.e., that U_x is a neighborhood of x such that $U_x \subseteq U$. To prove that $U \in \mathcal{T}$, we will prove that $U = \bigcup_{x \in U} U_x$. Assume that $x' \in U_{x'}$. Then $x' \in U_{x'} \subseteq \bigcup_{x \in U} U_x$. Furthermore, any point in $\bigcup_{x \in U} U_x$ is in U_x for some $x \in U$ so by assumption, $U_x \subseteq U$ and $x \in U_x \subseteq U$. Hence, $U = \bigcup_{x \in U} U_x$. As U is the union of open sets it must be an open set as well by [T2](#). \square

3.2 Continuous maps

We know from [Theorem 2.13](#) that a map between metric spaces is continuous if and only if the preimage of an open set is open. This motivates the following definition.

Definition 3.11 (Continuous maps between topological spaces) Let X and Y be topological spaces. A map $f: X \rightarrow Y$ is said to be *continuous* if preimages of open sets are open, i.e., if V is an open set in Y then the preimage $f^{-1}(V)$ of V under f is open in X .

Hence, all continuous maps between metric spaces (X, d_X) and (Y, d_Y) are also continuous maps between the corresponding topological spaces X and Y with the metric topologies \mathcal{T}_{d_X} and \mathcal{T}_{d_Y} , respectively.

Example 3.12 Let X and Y be topological spaces. Then all constant maps from X to Y are continuous: the preimages are either empty or the entire space, and these are always open, cf. [T1](#).

Example 3.13 Let X be a discrete topological space and Y a topological space. Then all maps from X to Y are continuous.

Example 3.14 Let X be any topological space and Y be an indiscrete topological space. Then all maps from X to Y are continuous.

Example 3.15 Let \mathbb{R}_{disc} be the discrete topological space consisting of the real numbers with the discrete topology, and let \mathbb{R} be the topological space consisting of the the real numbers with the usual (Euclidean) metric topology. Then the identity map

$$\mathbb{R}_{\text{disc}} \xrightarrow{\text{id}} \mathbb{R}$$

is continuous by [Example 3.13](#), while the identity map

$$\mathbb{R} \xrightarrow{\text{id}} \mathbb{R}_{\text{disc}}$$

is *not* continuous: singletons are open in the discrete topology but not in the (Euclidean) metric topology.

The following theorem says that the composition of two continuous maps is a continuous map.

Theorem 3.16 (Composition of continuous maps) Let X, Y and Z be topological spaces. If $f: X \rightarrow Y$ and $g: Y \rightarrow Z$ are continuous maps, then the composite $g \circ f: X \rightarrow Z$ is continuous.

Proof. Let $W \subseteq Z$ be open in Z . We need to prove that $(g \circ f)^{-1}(W)$ is open in X . Since

$$\begin{aligned} (g \circ f)^{-1}(W) &= \{x \in X \mid g(f(x)) \in W\} \\ &= \{x \in X \mid f(x) \in g^{-1}(W)\} \\ &= \{x \in X \mid x \in f^{-1}(g^{-1}(W))\} = f^{-1}(g^{-1}(W)) \end{aligned}$$

and that $g^{-1}(W)$ is open in Y and $f^{-1}(g^{-1}(W))$ is open in X (by continuity of g and f), it follows that $(g \circ f)^{-1}(W)$ is open in X . Hence, $g \circ f$ is continuous. \square

We can express continuity at a point for maps between topological spaces using neighborhoods. (See [Theorem 2.12](#) for the case of metric spaces.)

Definition 3.17 (Continuity at a point) Let X and Y be topological spaces, and let $x \in X$. A map $f: X \rightarrow Y$ is *continuous at x* if for all neighborhoods V of $f(x)$ there is a neighborhood U of x such that $f(U) \subseteq V$.

Theorem 3.18 Let X and Y be topological spaces. A map $f: X \rightarrow Y$ is continuous if and only if it is continuous at each $x \in X$.

Proof. Assume that f is continuous, and let $x \in X$ and V be a neighborhood of $f(x)$. Then the set $U = f^{-1}(V)$ is a neighborhood of x such that $f(U) \subseteq V$.

Assume that f is continuous at each $x \in X$. Let $V \subseteq Y$ be open in Y . Choose $x \in f^{-1}(V)$. Since f is continuous at x there is neighborhood U_x of x such that $f(U_x) \subseteq V$. Hence, $U_x \subseteq f^{-1}(V)$. It

follows that $f^{-1}(V)$ can be written as the union of the open sets U_x , and hence, it is open in X . Thus f is continuous. \square

3.3 Homeomorphisms

We now introduce the notion of topological equivalence, also known as homeomorphism.

Definition 3.19 (Homeomorphisms) Let X and Y be topological spaces. A bijective map $f: X \rightarrow Y$ with the property that both f and $f^{-1}: Y \rightarrow X$ are continuous, is called a *homeomorphism*. If there exists a homeomorphism $f: X \rightarrow Y$, we say that X and Y are *homeomorphic* and write $X \cong Y$.



A homeomorphism $f: X \rightarrow Y$ gives a one-to-one correspondence between open sets in X and Y . As a result, any property of a topological space that can be expressed in terms of its elements and its open subsets is preserved by homeomorphisms. Such a property is called a *topological property*.

Example 3.20 Let \mathbb{R} be the topological space of the real numbers with the (Euclidean) metric topology. The map

$$\begin{aligned} f: \mathbb{R} &\rightarrow \mathbb{R} \\ x &\mapsto 2x - 1 \end{aligned}$$

is a homeomorphism. Let

$$\begin{aligned} g: \mathbb{R} &\rightarrow \mathbb{R} \\ y &\mapsto \frac{1}{2}(y + 1) \end{aligned}$$

then, clearly, $g(f(x)) = x$ and $f(g(y)) = y$ for all real numbers x and y . Thus f is a bijection and $f^{-1} = g$. From calculus we know that f and g are continuous. Hence, f is a homeomorphism.

Example 3.21 Let $X = \{a, b\}$, and let $\mathcal{T}_1 = \{\emptyset, \{a\}, X\}$ and $\mathcal{T}_2 = \{\emptyset, \{b\}, X\}$ be two topologies on X . The map $f: X \rightarrow X$ given by $f(a) = b$ and $f(b) = a$ is clearly a continuous bijection (with the domain given \mathcal{T}_1 as topology, and the codomain given \mathcal{T}_2 as topology). Also, f is its own inverse: $f = f^{-1}$. Hence, f is a homeomorphism and $(X, \mathcal{T}_1) \cong (X, \mathcal{T}_2)$.

Homeomorphisms are continuous bijections, but the converse is not true.

Example 3.22 Let $X = \{a, b\}$. The identity map $\text{id}: X \rightarrow X$ where the domain is given the discrete topology and the codomain is given the indiscrete topology is a continuous bijection but *not* a homeomorphism: the inverse map is not continuous.

The following theorem says that being homeomorphic is an equivalence relation on any set of topological spaces.

Theorem 3.23 *Let X, Y and Z be topological spaces.*

Reflexivity *The identity map $\text{id}: X \rightarrow X$ (where the domain and the codomain are equipped with the same topology), given by $\text{id}(x) = x$ for $x \in X$, is a homeomorphism.*

Symmetry *If $f: X \rightarrow Y$ is a homeomorphism, then $f^{-1}: Y \rightarrow X$ is also a homeomorphism.*

Transitivity *If $f: X \rightarrow Y$ and $g: Y \rightarrow Z$ are homeomorphisms, then $g \circ f: X \rightarrow Z$ is also a homeomorphism.*

Proof. The identity map $\text{id}: X \rightarrow X$ (where the domain and the codomain are equipped with the same topology) is clearly continuous and bijective. As the identity map is its own inverse, then it is also a homeomorphism. Hence, $X \cong X$ and so \cong satisfies the reflexivity condition for an equivalence relation.

If $f: X \rightarrow Y$ is a homeomorphism, then $f^{-1}: Y \rightarrow X$ is also a homeomorphism: f^{-1} is a continuous bijection with continuous inverse $(f^{-1})^{-1} = f: X \rightarrow Y$. Hence, $X \cong Y$ if and only if $Y \cong X$. Thus \cong satisfies the symmetry condition for an equivalence relation.

Theorem 3.16 tells us that the composition of two homeomorphisms $f: X \rightarrow Y$ and $g: Y \rightarrow Z$ is continuous. The composition of two bijective maps is always bijective. Hence, $g \circ f$ is a continuous bijection. We need to prove that its inverse, $(g \circ f)^{-1}$, is continuous. Since $(g \circ f)^{-1} = f^{-1} \circ g^{-1}$ is a composition of continuous maps, then by **Theorem 3.16** so is $(g \circ f)^{-1}$. Thus $g \circ f$ is a homeomorphism. Hence, if $X \cong Y$ and $Y \cong Z$, then $X \cong Z$. Thus \cong satisfies the transitivity condition for an equivalence relation. \square

3.4 Closed sets

Recall that in a topological space X , a subset A of X is an open subset if and only if A is an element of the topology of X , i.e., $A \in \mathcal{T}$.

Definition 3.24 (Closed subsets) A subset K of a topological space X is *closed* in X if and only if the complement $K^c = X \setminus K$ is open in X .

This is completely analogous to how we defined closed subsets in metric spaces, cf. **Definition 2.9**.

Example 3.25 Let X be a discrete topological space. Since every subset of X is open in X , it follows that every subset of X is also closed in X .

Example 3.26 Let X be an indiscrete topological space. The only subsets of X that are closed in X are \emptyset and X (which are also the only subsets that are open in X).

Recall that in a discrete topological space, all the singletons are open sets. This is usually *not* the case.

Example 3.27 Let \mathbb{R} be the topological space of the real numbers with the (Euclidean) metric topology. Then every subset $[a, b] = \{x \in \mathbb{R} \mid a \leq x \leq b\} \subseteq \mathbb{R}$ is closed in \mathbb{R} : the complement $[a, b]^c = \mathbb{R} \setminus [a, b] = (-\infty, a) \cup (b, \infty)$ is a union of open sets in \mathbb{R} , and hence, is open in \mathbb{R} . Furthermore, all the singletons are closed: the complement $\{a\}^c = \mathbb{R} \setminus \{a\} = (-\infty, a) \cup (a, \infty)$

is a union of open sets in \mathbb{R} , and hence, is open in \mathbb{R} .

By passing to complements we get the following theorem.

Theorem 3.28 *Let X be a topological space.*

- (1) *Both \emptyset and X are closed (as subsets) in X .*
- (2) *The intersection of any subcollection of closed sets in X is closed in X .*
- (3) *The union of any finite subcollection of closed sets in X is closed in X .*

It follows that we could have defined a topological space X by specifying a collection of subsets of X satisfying the three statements in [Theorem 3.28](#) where we would say that a subset of X is open in X if its complement is closed in X .

We end this section with a theorem describing the connection between continuous maps and closed sets. We will need the following definition.

Definition 3.29 (Closure) Let X be a topological space, and let A be a subset of X . The *closure of A* , written \overline{A} , is the intersection of all subsets of X that contain A and which are closed in X .

From the definition it follows that \overline{A} is the smallest subset of X that contains A and which is closed in X . Furthermore, if A is closed in X , then $\overline{A} = A$.

There is an analogous definition for open sets where we take union instead of intersection. We can define the *interior of A* , written $\text{Int}(A)$, to be the union of all subsets of X that are contained in A and which are open in X . It follows that $\text{Int}(A)$ is the largest subset of X that is contained in A and which is open in X . Furthermore, $\text{Int}(A) \subseteq A \subseteq \overline{A}$.

Example 3.30 Let X be a topological space consisting of the set $\{a, b, c\}$ and the topology $\mathcal{T} = \{\emptyset, \{a\}, \{a, b\}, X\}$. Then the closed subsets in X are $\emptyset, \{b, c\}, \{c\}$ and X . Thus the intersection of all of the closed subsets that contain $\{b\}$ is simply $\{b, c\} \cap X = \{b, c\}$, and hence, $\overline{\{b\}} = \{b, c\}$.

Example 3.31 Let \mathbb{R} be the topological space of the real numbers with the (Euclidean) metric topology. Assume that $a < b$ are real numbers. Then $\overline{(a, b)} = [a, b]$ and $\text{Int}((a, b)) = (a, b)$.

Let (X, d) be a metric space. If we consider X as a topological space with the metric topology \mathcal{T}_d , the closure $\overline{B(x; r)}$ of an open ball $B(x; r)$ about $x \in X$ is, in general, *not* the same as the closed ball $\overline{B(x; r)}$. If d is the discrete metric and X has at least two elements, then $\overline{B(x; 1)} = \{x\}$ while $\overline{B(x; 1)} = X$. It is always the case that $\overline{B(x; r)} \subseteq \overline{B(x; r)}$.

Definition 3.32 (Dense) Let X be a topological space, and let A be a subset of X . We say that A is *dense in X* if $\overline{A} = X$.

From the definition it follows that A is dense in X if and only if $A \cap U \neq \emptyset$ for every nonempty subset U of X which is open in X .

Example 3.33 Let \mathbb{R} be the topological space of the real numbers with the (Euclidean) metric topology. Then the subset \mathbb{Q} of rational numbers is dense in \mathbb{R} : $\overline{\mathbb{Q}} = \mathbb{R}$.

Example 3.34 For any topological space X , the subset X is dense in X . If X is a discrete topological space, then the subset X is the only dense subset in X .

Theorem 3.35 Let $f: X \rightarrow Y$ be a map between topological spaces. Then the following are equivalent:

- (1) f is continuous;
- (2) for every subset A of X , we have $f(\overline{A}) \subseteq \overline{f(A)}$;
- (3) for every closed subset B of Y , the preimage $f^{-1}(B)$ of B under f is closed in X .

Proof. By passing to complements, it follows readily that (1) and (3) are equivalent. We will prove that (2) is equivalent to (3).

Assume (2). Let B be a subset of Y that is closed in Y , and let $A = f^{-1}(B)$. We must show that A is closed. We have $f(A) \subseteq B$. If $x \in \overline{A}$, then $f(x) \in f(\overline{A}) \subseteq \overline{f(A)} \subseteq B$. Hence, $x \in f^{-1}(B) = A$. In other words, $\overline{A} \subseteq A$. Thus $A = \overline{A}$, and hence, $f^{-1}(B)$ is closed in X .

Now assume (3). Let A be a subset of X . We must show that $f(\overline{A}) \subseteq \overline{f(A)}$. Since $\overline{f(A)}$ is closed in Y , it follows by assumption that $f^{-1}(\overline{f(A)})$ is closed in X . Furthermore, $A \subseteq f^{-1}(f(A)) \subseteq f^{-1}(\overline{f(A)})$. Since $f^{-1}(\overline{f(A)})$ is closed in X , it follows that $\overline{A} \subseteq f^{-1}(\overline{f(A)})$. Hence, $f(\overline{A}) \subseteq \overline{f(A)}$. \square

3.5 Exercises

Exercise 3.1 Let $X = \{a, b, c, d\}$. Show that $\mathcal{T} = \{\emptyset, \{a\}, \{a, b\}, \{a, b, c\}, \{b, c, d\}, X\}$ is not a topology on X . Find a topology \mathcal{T}' (different from the discrete topology) on X such that $\mathcal{T} \subseteq \mathcal{T}'$.

Exercise 3.2 Let X be a non-empty set, and let x_0 be an element of X . Show that

$$\mathcal{T} = \{U \subseteq X \mid x_0 \notin U \text{ or } X \setminus U \text{ is finite}\}$$

is a topology on X .

Exercise 3.3 Let X be a set, and let A be a subset of X . Define the coarsest topology on X such that A is open in X .

Exercise 3.4 Show that the discrete topology $\mathcal{T}_{\text{disc}}$ is finer than the cofinite topology \mathcal{T}_{cof} on any set X .

Exercise 3.5 Let $X = \{a, b, c, d\}$. Find two topologies \mathcal{T}_1 and \mathcal{T}_2 with $\mathcal{T}_1 \neq \mathcal{T}_2$ such that a bijection $f: X \rightarrow X$ is a homeomorphism (where the domain is given \mathcal{T}_1 as topology and the codomain is given \mathcal{T}_2 as topology).

Exercise 3.6 Let X be a topological space, and let A and B be subsets of X .

(a) Assume that $A \subseteq B$. Show that $\overline{A} \subseteq \overline{B}$.

(b) Show that $\overline{A \cup B} = \overline{A} \cup \overline{B}$.

We say that a set A *intersects* or *meets* a set B if $A \cap B \neq \emptyset$.

Exercise 3.7 Let X be a topological space, and let A be a subset of X . Show that $x \in \overline{A}$ if and only if every neighborhood of x intersects A .

Exercise 3.8 Let $X = \{a, b, c, d, e\}$, and let

$$\mathcal{T} = \{\emptyset, \{a, b\}, \{a, b, c\}, \{a, b, d, e\}, \{b\}, \{b, c\}, \{b, d, e\}, \{b, c, d, e\}, \{d, e\}, X\}$$

be a topology on X . Is the subset $\{a, b\}$ dense in X ?

4. Generating topologies

4.1 Generating topologies from subsets

The following theorem tells us how we may extract a third topology from two other topologies on the same set.

Theorem 4.1 (The intersection of two topologies is a topology) *Let X be a set, and let \mathcal{T}_1 and \mathcal{T}_2 be two topologies on X . Then $\mathcal{T}_1 \cap \mathcal{T}_2$ is also a topology on X .*

Proof. Clearly, \emptyset and X are in $\mathcal{T}_1 \cap \mathcal{T}_2$, so **T1** is satisfied.

Let $\{U_\lambda\}_{\lambda \in \Lambda}$ be a collection of sets such that $U_\lambda \in \mathcal{T}_1 \cap \mathcal{T}_2$ for each $\lambda \in \Lambda$ where Λ is some index set. Then, for $i = 1, 2$, $U_\lambda \in \mathcal{T}_i$ for each $\lambda \in \Lambda$. Thus $\bigcup_{\lambda \in \Lambda} U_\lambda \in \mathcal{T}_i$ for $i = 1, 2$. Hence, $\bigcup_{\lambda \in \Lambda} U_\lambda \in \mathcal{T}_1 \cap \mathcal{T}_2$, and so, **T2** is satisfied.

Finally, to prove that **T3** is satisfied, let $U, V \in \mathcal{T}_1 \cap \mathcal{T}_2$. Thus, for $i = 1, 2$, $U, V \in \mathcal{T}_i$ implies that $U \cap V \in \mathcal{T}_i$. Hence, $U \cap V \in \mathcal{T}_1 \cap \mathcal{T}_2$. \square

Theorem 4.1 may be extended to hold for a family of topologies: if $\{\mathcal{T}_\lambda\}_{\lambda \in \Lambda}$ is a family of topologies on X , then $\bigcap_{\lambda \in \Lambda} \mathcal{T}_\lambda$ is also a topology on X . If we follow the convention that for subsets S of a fixed (large) set U ,



$$\bigcap_{S \in \emptyset} S = U,$$

then the extended version of **Theorem 4.1** may also include an empty family $\{\mathcal{T}_\lambda\}_{\lambda \in \emptyset}$ of topologies with

$$\bigcap_{\lambda \in \emptyset} \mathcal{T}_\lambda = \mathcal{P}(X),$$

i.e., the discrete topology on X (with our fixed (large) set U being equal to $\mathcal{P}(X)$). However, not all mathematicians follow this convention. Thus we will in general not define the intersection of an empty family.

The union of two topologies is not necessarily a topology.

Example 4.2 Let $X = \{a, b, c\}$, and let $\mathcal{T}_1 = \{\emptyset, \{a\}, \{a, b\}, X\}$ and $\mathcal{T}_2 = \{\emptyset, \{c\}, X\}$ be two topologies on X . Then

$$\mathcal{T}_1 \cap \mathcal{T}_2 = \{\emptyset, X\}$$

is the indiscrete topology on X while

$$\mathcal{T}_1 \cup \mathcal{T}_2 = \{\emptyset, \{a\}, \{a, b\}, \{c\}, X\}$$

is *not* a topology on X : $\mathcal{T}_1 \cup \mathcal{T}_2$ does not satisfy **T2**.

Recall from [Section 3.1](#) that for any set X the discrete topology $\mathcal{T}_{\text{disc}}$ is the largest topology we may equip X with, and the indiscrete topology \mathcal{T}_{ind} is the smallest topology we may equip X with. For any topology \mathcal{T} on X we have

$$\mathcal{T}_{\text{ind}} \subseteq \mathcal{T} \subseteq \mathcal{T}_{\text{disc}}.$$

That is, we have partially ordered topologies on X by inclusion.

Let X be a set. We often want to have a collection of subsets \mathcal{S} of X to be the open subsets of a topology on X .

Definition 4.3 (Topology generated by a collection of subsets) Let X be a set, and let \mathcal{S} be a collection of subsets of X . The *topology generated by \mathcal{S}* is the topology

$$\langle \mathcal{S} \rangle = \bigcap_{\mathcal{T} \text{ topology}}^{\mathcal{S} \subseteq \mathcal{T}} \mathcal{T}$$

on X .

In other words, $\langle \mathcal{S} \rangle$ contains \mathcal{S} and for any other topology \mathcal{T}' containing \mathcal{S} , we have $\langle \mathcal{S} \rangle \subseteq \mathcal{T}'$. Thus $\langle \mathcal{S} \rangle$ is unique.

Example 4.4 Let X be a set, and let $\mathcal{S} = \emptyset$. Then $\langle \mathcal{S} \rangle$ is the same as the indiscrete topology on X , i.e.,

$$\langle \mathcal{S} \rangle = \mathcal{T}_{\text{ind}} = \{\emptyset, X\}.$$

Example 4.5 Let X be a set, and let \mathcal{S} be the collection of all the singletons of X , i.e., $\mathcal{S} = \{\{x\} \mid x \in X\}$. Then $\langle \mathcal{S} \rangle$ is the same as the discrete topology on X , i.e.,

$$\langle \mathcal{S} \rangle = \mathcal{T}_{\text{disc}} = \mathcal{P}(X).$$

4.2 Basis for a topology

It is often convenient to define a topology \mathcal{T} on a set X by only specifying a subcollection \mathcal{B} of \mathcal{T} satisfying certain properties. The open subsets of X are then precisely the unions of subcollections of \mathcal{B} . In this way, we say the basis determines, or generates, the topology.

Definition 4.6 (Basis) Let X be a set. A *basis* for a topology on X is a collection \mathcal{B} of subsets of X such that

- B1** for each $x \in X$, there is a $B \in \mathcal{B}$ such that $x \in B$;
- B2** if $B_1, B_2 \in \mathcal{B}$ and $x \in B_1 \cap B_2$, then there is a $B_3 \in \mathcal{B}$ such that $x \in B_3 \subseteq B_1 \cap B_2$.

The elements of \mathcal{B} are sometimes referred to as *basis elements*. Basis elements are subsets of X .

Example 4.7 Let X be a set, and let \mathcal{B} be the collection of all the singletons of X . Then \mathcal{B} is a basis for the discrete topology on X .

Example 4.8 Let (X, d) be a metric space. Then the collection of (open) ϵ -balls

$$\mathcal{B} = \{B(x; \epsilon) \mid x \in X, \epsilon > 0\}$$

is a basis for the metric topology \mathcal{T}_d , as defined in [Theorem 3.2](#), on X .

The following theorem describes a topology generated by a basis.

Theorem 4.9 *Let X be a set, and let \mathcal{B} be basis for a topology on X . The collection \mathcal{T} generated by \mathcal{B} of subsets U of X with the property that for each $x \in U$ there is a basis element $B \in \mathcal{B}$ with $x \in B \subseteq U$ is a topology on X .*

Proof. Clearly, \emptyset and X are both in \mathcal{T} . Hence, [T1](#) is satisfied.

Let $\{U_\lambda\}_{\lambda \in \Lambda}$ be a subcollection of \mathcal{T} . Let $V = \bigcup_{\lambda \in \Lambda} U_\lambda$. We need to prove that $V \in \mathcal{T}$. Let $x \in V$. Then there is a $\lambda \in \Lambda$ such that $x \in U_\lambda$. Since $U_\lambda \in \mathcal{T}$, there is a basis element $B \in \mathcal{B}$ such that $x \in B \subseteq U_\lambda$. As $U_\lambda \subseteq V$, it follows that $x \in B \subseteq V$. Hence, $V \in \mathcal{T}$, and so, [T2](#) is satisfied.

Let $U_1, U_2 \in \mathcal{T}$. We need to prove that $U_1 \cap U_2 \in \mathcal{T}$. Let $x \in U_1 \cap U_2$. Since $U_1 \cap U_2 \subseteq U_i$ we have $x \in U_i$, and thus there is a basis element $B_i \in \mathcal{B}$ with $x \in B_i \subseteq U_i$ for $i = 1, 2$. Hence, $x \in B_1 \cap B_2 \subseteq U_1 \cap U_2$. By [B2](#) there is a basis element $B_3 \in \mathcal{B}$ with $x \in B_3 \subseteq B_1 \cap B_2$. Thus $x \in B_3 \subseteq U_1 \cap U_2$, and hence, [T3](#) is satisfied. \square

The topology generated by a basis may also be described using the following theorem.

Theorem 4.10 *Let X be a set, and let \mathcal{B} be a basis for a topology \mathcal{T} on X . Then \mathcal{T} is equal to the collection of all unions of elements of \mathcal{B} .*

Proof. Let $B \in \mathcal{B}$ be any basis element. Then for each $x \in B$ we obviously have $x \in B$ and $B \subseteq B$. Thus $B \in \mathcal{T}$. It follows that any union of basis elements is a union of elements of \mathcal{T} , and hence, is in \mathcal{T} .

Conversely, let $U \in \mathcal{T}$. For each $x \in U$ there is a $B_x \in \mathcal{B}$ with $x \in B_x$ and $B_x \subseteq U$. Then $U = \bigcup_{x \in U} B_x$, and thus, U is the union of elements of \mathcal{B} . \square

We end this section with a theorem describing a criterion for whether one topology is finer than another when both topologies are described using bases.

Theorem 4.11 *Let X be a set, and let \mathcal{B}_1 and \mathcal{B}_2 be bases for topologies \mathcal{T}_1 and \mathcal{T}_2 , respectively, on X . Then the following are equivalent:*

- (1) \mathcal{T}_2 is finer than \mathcal{T}_1 , i.e., $\mathcal{T}_1 \subseteq \mathcal{T}_2$.
- (2) For each $B_1 \in \mathcal{B}_1$ and each $x \in B_1$ there is a $B_2 \in \mathcal{B}_2$ such that $x \in B_2 \subseteq B_1$.

Proof. Assume (1). Let $B_1 \in \mathcal{B}_1$ and $x \in B_1$. Since $B_1 \in \mathcal{T}_1$ and $\mathcal{T}_1 \subseteq \mathcal{T}_2$ we have $B_1 \in \mathcal{T}_2$. Furthermore, as \mathcal{T}_2 is the topology generated by \mathcal{B}_2 there is a $B_2 \in \mathcal{B}_2$ such that $x \in B_2$ where $B_2 \subseteq B_1$. Hence, (2) is satisfied.

Now assume (2). Let $U \in \mathcal{T}_1$. We must prove that $U \in \mathcal{T}_2$. Since \mathcal{B}_1 generates \mathcal{T}_1 , then for each $x \in U$ there is a $B_1 \in \mathcal{B}_1$ such that $x \in B_1 \subseteq U$. By assumption there is a $B_2 \in \mathcal{B}_2$ such that $x \in B_2 \subseteq B_1$. Hence, $B_2 \subseteq U$, and so, $U \in \mathcal{T}_2$. Thus (1) is satisfied. \square



In order to have $\mathcal{T}_1 \subseteq \mathcal{T}_2$ it is *not* necessary to have $\mathcal{B}_1 \subseteq \mathcal{B}_2$, i.e., each basis element in \mathcal{B}_1 need not be a basis element in \mathcal{B}_2 . However, for each basis element $B_1 \in \mathcal{B}_1$ and each point $x \in B_1$ there should be some (possibly) smaller basis element $B_2 \in \mathcal{B}_2$ such that $x \in B_2 \subseteq B_1$.

4.3 Subbasis for a topology

Let X be a set, and let \mathcal{S} be a collection of subsets of X . We can form a basis \mathcal{B} for a topology by simply taking all finite intersections

$$B = \bigcap_{i=1}^n S_i$$

of elements of \mathcal{S} . Thus the open sets in the topology generated by this basis are all unions of such basis elements B , cf. [Theorem 4.10](#). Thus the open sets are all unions of all finite intersections of elements of \mathcal{S} . The collection \mathcal{S} is then referred to as a subbasis.

Definition 4.12 (Subbasis) Let X be a set. A *subbasis* for a topology on X is a collection \mathcal{S} of subsets of X whose union equals X .

Lemma 4.13 Let X be a set, and let \mathcal{S} be a subbasis for a topology on X . The collection \mathcal{B} consisting of all finite intersections of elements of \mathcal{S} is a basis for a topology on X and is called the *basis associated to \mathcal{S}* .

Proof. Each $x \in X$ must lie in some $S \in \mathcal{S}$. Hence, $x \in S$. Thus x is an element of the basis element S in \mathcal{B} , and so, [B1](#) is satisfied.

Let $B_1 = \bigcap_{i=1}^m S_i$ and $B_2 = \bigcap_{i=1}^n S'_i$ be two basis elements of \mathcal{B} , and let $x \in B_1 \cap B_2$. We must prove that there is a basis element $B_3 \in \mathcal{B}$ such that $x \in B_3 \subseteq B_1 \cap B_2$. Let

$$B_3 = \left(\bigcap_{i=1}^m S_i \right) \cap \left(\bigcap_{i=1}^n S'_i \right).$$

Then B_3 is also a finite intersection of elements of \mathcal{S} , and hence, $B_3 \in \mathcal{B}$ with $x \in B_3$. Thus [B2](#) is satisfied. \square

By combining the previous lemma with [Theorem 4.10](#), we get the following lemma.

Lemma 4.14 Let X be a set, and let \mathcal{S} be a subbasis for a topology on X . The collection \mathcal{T} generated by \mathcal{S} consisting of all unions of all basis elements of the associated basis \mathcal{B} is a topology on X .

When referring to the topology \mathcal{T} generated by the subbasis \mathcal{S} we mean the topology generated by the associated basis \mathcal{B} . We have $\mathcal{S} \subseteq \mathcal{B} \subseteq \mathcal{T}$.

The following theorem provides an explicit description of the topology generated by a collection of subsets \mathcal{S} of a set X .

Theorem 4.15 Let X be a set, and let \mathcal{S} be a subbasis for a topology on X . Then there is a unique topology $\langle \mathcal{S} \rangle$ generated by \mathcal{S} which is coarser than any other topology containing \mathcal{S} , where

$$\langle \mathcal{S} \rangle = \left\{ \bigcup_{\lambda \in \Lambda} \bigcap_{i=1}^{n_\lambda} S_{\lambda,i} \mid S_{\lambda,i} \in \mathcal{S} \right\}.$$

In other words, $\langle \mathcal{S} \rangle$ is the topology for which \mathcal{S} is a subbasis.

Proof. Since the discrete topology $\mathcal{T}_{\text{disc}} = \mathcal{P}(X)$, there is at least one topology on X that contains \mathcal{S} . We know from [Theorem 4.1](#) that taking the intersection of all topologies that contain \mathcal{S} is again a topology which clearly still contains \mathcal{S} . By construction, $\langle \mathcal{S} \rangle$ is then contained in any other topology containing \mathcal{S} . Thus $\langle \mathcal{S} \rangle$ is the unique topology with this property.

Let

$$\mathcal{T}_{\mathcal{S}} = \left\{ \bigcup_{\lambda \in \Lambda} \bigcap_{i=1}^{n_\lambda} S_{\lambda,i} \mid S_{\lambda,i} \in \mathcal{S} \right\}.$$

Clearly, $\mathcal{T}_{\mathcal{S}} \subseteq \langle \mathcal{S} \rangle$. We need to prove that they are equal. To do this we will prove that $\mathcal{T}_{\mathcal{S}}$ is a topology on X that contains \mathcal{S} . Hence, by the first part $\langle \mathcal{S} \rangle = \mathcal{T}_{\mathcal{S}}$. Since \mathcal{S} is a subbasis for a topology on X , by [Lemma 4.14](#) we know that the topology generated by \mathcal{S} is equal to the collection of all unions of basis elements of the associated \mathcal{B} to \mathcal{S} . Hence, $\mathcal{T}_{\mathcal{S}}$ is a topology on X . \square

We end this section with a theorem about continuity and (sub)basis.

Theorem 4.16 Let X and Y be topological spaces, and let \mathcal{B} (resp., \mathcal{S}) be a basis (resp., subbasis) for the topology on Y . Then a map $f: X \rightarrow Y$ is continuous if and only if for each $B \in \mathcal{B}$ (resp. $S \in \mathcal{S}$) the preimage $f^{-1}(B)$ (resp., $f^{-1}(S)$) is open in X .

Proof. We prove the statement about basis.

Assume that f is continuous. Since each basis element $B \in \mathcal{B}$ is open in Y , then by continuity $f^{-1}(B)$ is open in X .

Assume that for each $B \in \mathcal{B}$ the preimage $f^{-1}(B)$ is open in X . Let \mathcal{T}_Y be the topology on Y . Since every $V \in \mathcal{T}_Y$ is a union $V = \bigcup_{\lambda \in \Lambda} B_\lambda$ of basis elements $B_\lambda \in \mathcal{B}$, we have

$$f^{-1}(V) = \bigcup_{\lambda \in \Lambda} f^{-1}(B_\lambda).$$

Thus if each $f^{-1}(B_\lambda)$ is open in X , so is $f^{-1}(V)$. \square

4.4 Exercises

Exercise 4.1 Let $X = \{a, b, c, d, e\}$, and let

$$\mathcal{T} = \{\emptyset, \{a, b\}, \{a, b, d, e\}, \{b\}, \{b, d, e\}, \{b, c, d, e\}, \{c, d, e\}, \{d, e\}, X\}$$

be a topology on X . Show that $\mathcal{S} = \{\{a, b\}, \{b, d, e\}, \{c, d, e\}\}$ is a subbasis for \mathcal{T} . Is $\mathcal{S}' = \{\{a, b\}, \{b, c, d, e\}, \{d, e\}\}$ a subbasis for \mathcal{T} ?

Exercise 4.2 Let \mathcal{B} be the collection of all open intervals $(a, b) = \{x \in \mathbb{R} \mid a < x < b\}$ in \mathbb{R} .

- (a) Show that \mathcal{B} is a basis for a topology on \mathbb{R} . The topology generated by \mathcal{B} is called the *standard topology* on \mathbb{R} denoted by \mathcal{T}_{std} .
- (b) Show that $\mathcal{T}_{\text{std}} = \mathcal{T}_d$ where \mathcal{T}_d is the metric topology obtained from the metric $d(x, y) = |x - y|$.

Exercise 4.3 Show that

$$\mathcal{S} = \{(a, \infty) \mid a \in \mathbb{R}\} \cup \{(-\infty, b) \mid b \in \mathbb{R}\}$$

is a subbasis for the standard topology on \mathbb{R} .

Exercise 4.4 Let \mathbb{Q} denote the set of rational numbers, and let \mathbb{R} denote the set of real numbers. Show that

$$\mathcal{B} = \{(a, b) \mid a < b, a, b \in \mathbb{Q}\}$$

is a basis for the standard topology on \mathbb{R} where $(a, b) = \{x \in \mathbb{R} \mid a < x < b\}$.

Exercise 4.5 Let \mathcal{B} be the collection of all half-open intervals of the form $[a, b) = \{x \in \mathbb{R} \mid a \leq x < b\}$ in \mathbb{R} .

- (a) Show that \mathcal{B} is a basis for a topology on \mathbb{R} . The topology generated by \mathcal{B} is called the *lower limit topology* on \mathbb{R} .
- (b) Find the closure of the subset $(0, 1)$ of \mathbb{R} given the lower limit topology.

Exercise 4.6 For each $n \in \mathbb{Z}$, let

$$B(n) = \begin{cases} \{n\} & \text{if } n \text{ is odd,} \\ \{n-1, n, n+1\} & \text{if } n \text{ is even.} \end{cases}$$

Show that the collection $\mathcal{B} = \{B(n) \mid n \in \mathbb{Z}\}$ is a basis for a topology on \mathbb{Z} . The topology generated by \mathcal{B} is known as the *digital line topology* on \mathbb{Z} . See [1, pp. 62–64] for some applications of this topology.

Exercise 4.7 Let \mathcal{B} be the collection of all subsets of the form $A_{a,b} = \{az + b \mid z \in \mathbb{Z}\}$ of \mathbb{Z} , where $a, b \in \mathbb{Z}$ and $a \neq 0$. (The set $A_{a,b}$ is known as an *arithmetic progression*.)

- (a) Show that \mathcal{B} is a basis for a topology on \mathbb{Z} .
- (b) Show that there are infinitely many primes by using the topology generated by \mathcal{B} . (This topology is known as the *arithmetic progression topology* on \mathbb{Z} and it was used originally by Furstenberg [2] to show that there are infinitely many primes.)

Exercise 4.8 Let X be a topological space, and let \mathcal{B} be a basis for the topology on X . Show that a subset A of X is dense in X if and only if every non-empty basis element in \mathcal{B} intersects A . (Recall that a set U intersects a set V if $U \cap V \neq \emptyset$.)

5. Constructing topological spaces

5.1 Subspaces

Let A be a subset of a topological space X . There is a natural way to define a topology on A that is based on the topology on X .

Definition 5.1 (Subspace topology) Let X be a topological space, and let A be a subset of X . The collection

$$\mathcal{T}_A = \{A \cap U \mid U \text{ is open in } X\}$$

of subsets of A is called the *subspace topology* on A .

The subspace topology is indeed a topology.

Lemma 5.2 Let X be a topological space, and let A be a subset of X . Then the collection $\mathcal{T}_A = \{A \cap U \mid U \text{ is open in } X\}$ is a topology on A .

Proof. Let \mathcal{T} denote the topology on X .

Since $\emptyset, X \in \mathcal{T}$, $\emptyset = A \cap \emptyset$ and $A = A \cap X$, then, clearly, $\emptyset, A \in \mathcal{T}_A$. Hence, **T1** is satisfied.

Let $\{V_\lambda\}_{\lambda \in \Lambda}$ be a collection of subsets of A who are open in A , i.e., $V_\lambda \in \mathcal{T}_A$. We must show that $\bigcup_{\lambda \in \Lambda} V_\lambda \in \mathcal{T}_A$. For each $\lambda \in \Lambda$ there is a $U_\lambda \in \mathcal{T}$ such that $V_\lambda = A \cap U_\lambda$. Thus

$$\bigcup_{\lambda \in \Lambda} V_\lambda = \bigcup_{\lambda \in \Lambda} (A \cap U_\lambda) = A \cap \bigcup_{\lambda \in \Lambda} U_\lambda.$$

Since $\bigcup_{\lambda \in \Lambda} U_\lambda \in \mathcal{T}$, it follows that $\bigcup_{\lambda \in \Lambda} V_\lambda \in \mathcal{T}_A$. Hence, **T2** is satisfied.

Let V_1, V_2, \dots, V_n be subsets of A that are open in A , i.e., $V_i \in \mathcal{T}_A$ for $i = 1, 2, \dots, n$. We must show that $\bigcap_{i=1}^n V_i \in \mathcal{T}_A$. For each $i \in \{1, 2, \dots, n\}$ there is a $U_i \in \mathcal{T}$ such that $V_i = A \cap U_i$. Thus

$$\bigcap_{i=1}^n V_i = \bigcap_{i=1}^n (A \cap U_i) = A \cap \bigcap_{i=1}^n U_i.$$

Since $\bigcap_{i=1}^n U_i \in \mathcal{T}$, it follows that $\bigcap_{i=1}^n V_i \in \mathcal{T}_A$. Hence, **T3** is satisfied. □



Let X be a topological space (with topology \mathcal{T}), and let A be a subspace of X . If V is a subset of A , there are two possible meanings to the statement “ V is open.” We can either take V to be open in X , i.e., $V \in \mathcal{T}$, or we can take V to be open in A , i.e., $V \in \mathcal{T}_A$. In general, these do *not* mean the same thing.

The next example illustrates the fact that we may have subsets of a topological space X that are open in the subspace A but which are not open in X .

Example 5.3 Let \mathbb{R} denote the set of real numbers equipped with the standard topology, cf. [Exercise 4.2](#), and let $I = [0, 1]$ be a subspace of \mathbb{R} . Then sets of the form $[0, a)$ and $(a, 1]$ with $0 < a < 1$ are open in I but not in \mathbb{R} .

The following theorem describes how we may extract a basis for the subspace topology on A from the basis of a topology on X .

Theorem 5.4 Let X be a topological space, and let \mathcal{B} be a basis for the topology on X . If A is a subset of X , then the collection

$$\mathcal{B}_A = \{A \cap B \mid B \in \mathcal{B}\}$$

is a basis for the subspace topology on A .

Proof. We need to prove that \mathcal{B}_A is a basis for the subspace topology on A . We first prove that \mathcal{B}_A is a basis for a topology on A , and then that the topology generated by \mathcal{B}_A equals the subspace topology on A .

First note that each $B \in \mathcal{B}$ is open in X , and so, each $A \cap B \in \mathcal{B}_A$ is open in A . For each $x \in X$ there is a basis element $B \in \mathcal{B}$ such that $x \in B$. Let $x \in A$. Since $A = A \cap X$, there must be a basis element $B \in \mathcal{B}$ such that $x \in A \cap B$. Hence, [B1](#) holds. Now let $x \in A \cap (B_1 \cap B_2)$ where B_1 and B_2 are basis elements of \mathcal{B} . Since \mathcal{B} is a basis for the topology on X , it follows that there is a basis element B_3 of \mathcal{B} such that $B_3 \subseteq B_1 \cap B_2$ and $x \in A \cap B_3 \subseteq A \cap (B_1 \cap B_2)$. Hence, [B2](#) is satisfied. Thus \mathcal{B}_A is a basis for a topology on A .

Let \mathcal{T}_A be the subspace topology on A . We want to prove that the topology \mathcal{T}' generated by \mathcal{B}_A is equal to \mathcal{T}_A . If $A \cap U \in \mathcal{T}_A$ and $x \in A \cap U$, then, using the fact that \mathcal{B} is a basis for the topology on X , we have $B \in \mathcal{B}$ such that $x \in A \cap B \subseteq A \cap U$. Thus $A \cap U \in \mathcal{T}'$, cf. [Theorem 4.9](#). By [Theorem 4.10](#) we know that \mathcal{T}' is equal to the collection of all unions of elements of \mathcal{B}_A . Hence, if $W \in \mathcal{T}'$ then W equals a union of elements of \mathcal{B}_A . Since each element of \mathcal{B}_A belongs to \mathcal{T}_A and \mathcal{T}_A is a topology, W also belongs to \mathcal{T}_A . \square

We end this section with an alternative description of the subspace topology. Let X be a topological space, and let T be a set. There do exist topologies on T that make $f: T \rightarrow X$ continuous, e.g., the discrete topology. If \mathcal{T}_f is the intersection of all topologies on T such that f is continuous, then \mathcal{T}_f is the coarsest topology for which f is continuous and

$$\mathcal{T}_f = \{f^{-1}(U) \mid U \text{ is open in } X\}.$$

From this we may define the subspace topology as follows: Let X be a topological space, and let A be subset of X . The *subspace topology* on A is then the coarsest topology on A for which the inclusion $i: A \rightarrow X$, given by $i(x) = x$ for $x \in A$, is continuous. This coincides with our previous definition as $i^{-1}(U) = A \cap U$ for any subset U of X . Thus

$$\mathcal{T}_i = \{i^{-1}(U) \mid U \text{ is open in } X\} = \{A \cap U \mid U \text{ is open in } X\},$$

and hence, $\mathcal{T}_i = \mathcal{T}_A$.

The following theorem describes a universal property for the subspace topology.

Theorem 5.5 *Let X be a topological space, and let A be a subset of X . Then the subspace topology on A is the only topology on A with the following universal property: for every topological space Y and every map $f: Y \rightarrow A$, f is continuous if and only if $i \circ f: Y \rightarrow X$ is continuous where $i: A \rightarrow X$ is the inclusion map given by $i(x) = x$ for $x \in A$.*

$$\begin{array}{ccc} & & X \\ & \nearrow^{i \circ f} & \uparrow i \\ Y & \xrightarrow{f} & A \end{array}$$

Proof. We will first prove that the subspace topology \mathcal{T}_A has the universal property that for every topological space Y and every map $f: Y \rightarrow A$, f is continuous if and only if $i \circ f: Y \rightarrow X$ is continuous. Then we will prove that \mathcal{T}_A is the only topology on A with this property.

Consider A as a subspace of X . Assume that f is continuous. Since the inclusion map i is continuous (with A given the subspace topology), and the composition of two continuous maps is again continuous, cf. [Theorem 3.16](#), it follows that $i \circ f$ is continuous. Now assume that $i \circ f$ is continuous. Let V be an open set in A , i.e., $V = A \cap U$ for some open set U in X . Since

$$f^{-1}(V) = f^{-1}(A \cap U) = f^{-1}(i^{-1}(U)) = (i \circ f)^{-1}(U)$$

is open in Y by continuity of $i \circ f$, it follows that f is continuous. Thus the subspace topology \mathcal{T}_A has the desired property.

Let \mathcal{T}' be a topology on A with the universal property that for every topological space Y and every map $f: Y \rightarrow A$, f is continuous if and only if $i \circ f: Y \rightarrow X$ is continuous. We must show that $\mathcal{T}_A = \mathcal{T}'$.

Let \mathcal{T} be the topology on X , and let A be given the topology \mathcal{T}' . First let $Y = A$ with the subspace topology. Then for $f = \text{id}: (A, \mathcal{T}_A) \rightarrow (A, \mathcal{T}')$, we have $i \circ \text{id} = i: (A, \mathcal{T}_A) \rightarrow (X, \mathcal{T})$ which is continuous. Hence, by the universal property id is continuous.

$$\begin{array}{ccc} & & (X, \mathcal{T}) \\ & \nearrow^{i \circ \text{id}} & \uparrow i \\ (A, \mathcal{T}_A) & \xrightarrow{\text{id}} & (A, \mathcal{T}') \end{array}$$

Thus any $V \in \mathcal{T}'$ must also be an element of \mathcal{T}_A , and so, $\mathcal{T}' \subseteq \mathcal{T}_A$.

Secondly let $Y = A$ with \mathcal{T}' as its topology. Then, clearly, $f = \text{id}: (A, \mathcal{T}') \rightarrow (A, \mathcal{T}')$ is continuous. Thus by the universal property it follows that $i \circ \text{id} = i: (A, \mathcal{T}') \rightarrow (X, \mathcal{T})$ is continuous.

$$\begin{array}{ccc} & & (X, \mathcal{T}) \\ & \nearrow^{i \circ \text{id}} & \uparrow i \\ (A, \mathcal{T}') & \xrightarrow{\text{id}} & (A, \mathcal{T}') \end{array}$$

Thus for any $U \in \mathcal{T}$, we have $i^{-1}(U) = A \cap U \in \mathcal{T}'$. That is, $\mathcal{T}_A \subseteq \mathcal{T}'$. Hence, $\mathcal{T}_A = \mathcal{T}'$. □

5.2 Products

Let X and Y be topological spaces. If we want to give the product $X \times Y$ a topology, a first approach might be to take the collection

$$\mathcal{C} = \{U \times V \mid U \text{ is open in } X \text{ and } V \text{ is open in } Y\}$$

as the topology on $X \times Y$. However, \mathcal{C} is *not* a topology. The union of two elements of \mathcal{C} is not necessarily of the form $U \times V$ for some U open in X and some V open in Y . See Figure 5.1.

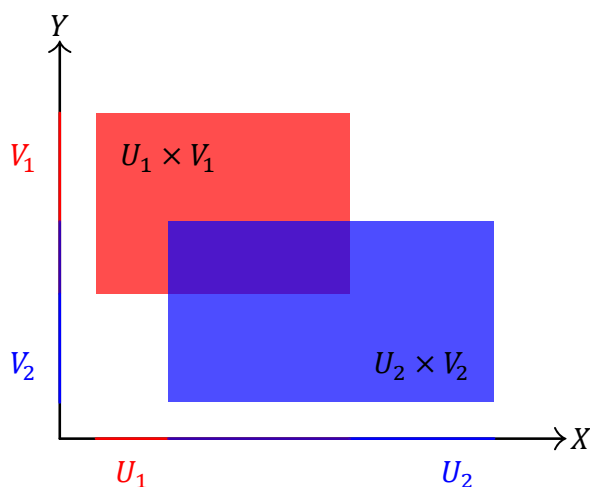


Figure 5.1: The collection \mathcal{C} of all products of open sets in X and in Y is not a topology on $X \times Y$.

We can remedy the situation by taking \mathcal{C} as a basis instead. The topology generated from this basis is what we will take to be the product topology on $X \times Y$.

Definition 5.6 (Product topology) Let X and Y be topological spaces. The *product topology* on $X \times Y$ is the topology generated by the basis

$$\mathcal{B} = \{U \times V \mid U \text{ is open in } X \text{ and } V \text{ is open in } Y\}.$$

Lemma 5.7 Let X and Y be topological spaces. Then the collection

$$\mathcal{B} = \{U \times V \mid U \text{ is open in } X \text{ and } V \text{ is open in } Y\}$$

is a basis for a topology on $X \times Y$.

Proof. Let $(x, y) \in X \times Y$. We need to show that there is a basis element $U \times V \in \mathcal{B}$ such that $(x, y) \in U \times V \subseteq X \times Y$. Since X is open in X and Y is open in Y , we simply take $U = X$ and $V = Y$. Thus **B1** is satisfied.

Now let $(x, y) \in (U_1 \times V_1) \cap (U_2 \times V_2)$ where $U_1 \times V_1, U_2 \times V_2 \in \mathcal{B}$. Since

$$(U_1 \times V_1) \cap (U_2 \times V_2) = (U_1 \cap U_2) \times (V_1 \cap V_2),$$

and $U_1 \cap U_2$ and $V_1 \cap V_2$ are open in X and Y , respectively, it follows by letting $U_3 = U_1 \cap U_2$ and $V_3 = V_1 \cap V_2$ that there is a basis element $U_3 \times V_3 \in \mathcal{B}$ such that $(x, y) \in U_3 \times V_3 \subseteq (U_1 \times V_1) \cap (U_2 \times V_2)$. Hence, **B2** holds. Thus \mathcal{B} is a basis for a topology on $X \times Y$. \square

The basis described in [Lemma 5.7](#) is relatively large; it consists of pairs of every open set U in X and every open set V in Y . The following theorem describes a smaller basis for the product topology based on bases rather than whole topologies.

Theorem 5.8 *Let X and Y be topological spaces. If \mathcal{B}_X is a basis for the topology on X and \mathcal{B}_Y is a basis for the topology on Y , then the collection*

$$\mathcal{B}_{X \times Y} = \{B_X \times B_Y \mid B_X \in \mathcal{B}_X \text{ and } B_Y \in \mathcal{B}_Y\}$$

is a basis for the product topology on $X \times Y$.

Proof. We follow the arguments for the proof of [Theorem 5.4](#) and adapt them to our current setting.

First note that each $B_X \times B_Y \in \mathcal{B}_X \times \mathcal{B}_Y$ is open in $X \times Y$ as each B_X is open in X and each B_Y is open in Y . Let $(x, y) \in X \times Y$. Using the fact that \mathcal{B}_X and \mathcal{B}_Y are bases for topologies on X and Y , respectively, there are basis elements $B_X \in \mathcal{B}_X$ and $B_Y \in \mathcal{B}_Y$ such that $(x, y) \in B_X \times B_Y \subseteq X \times Y$. Thus [B1](#) is satisfied. Now let $(x, y) \in (B_{X,1} \times B_{Y,1}) \cap (B_{X,2} \times B_{Y,2})$ where $B_{X,1}, B_{X,2} \in \mathcal{B}_X$ and $B_{Y,1}, B_{Y,2} \in \mathcal{B}_Y$. Since

$$(B_{X,1} \times B_{Y,1}) \cap (B_{X,2} \times B_{Y,2}) = (B_{X,1} \cap B_{X,2}) \times (B_{Y,1} \cap B_{Y,2})$$

and \mathcal{B}_X and \mathcal{B}_Y are bases for the topologies on X and Y , respectively, it follows that there are basis elements $B_{X,3} \in \mathcal{B}_X$ and $B_{Y,3} \in \mathcal{B}_Y$ such that $x \in B_{X,3} \subseteq B_{X,1} \cap B_{X,2}$, $y \in B_{Y,3} \subseteq B_{Y,1} \cap B_{Y,2}$ and $(x, y) \in B_{X,3} \times B_{Y,3} \subseteq (B_{X,1} \cap B_{X,2}) \times (B_{Y,1} \cap B_{Y,2})$. Thus [B2](#) holds. Hence, $\mathcal{B}_{X \times Y}$ is a basis for a topology on $X \times Y$.

Let $\mathcal{T}_{X \times Y}$ be the product topology on $X \times Y$. We want to prove that the topology \mathcal{T}' generated by $\mathcal{B}_{X \times Y}$ is equal to $\mathcal{T}_{X \times Y}$. Let $W \in \mathcal{T}_{X \times Y}$, and let $(x, y) \in W$. Then there is an open set U in X and an open set V in Y such that $(x, y) \in U \times V \subseteq W$, cf. [Theorem 4.9](#). Since U is open in X and \mathcal{B}_X is a basis for the topology on X , it follows that there is a basis element $B_X \in \mathcal{B}_X$ such that $x \in B_X \subseteq U$. Likewise, there is a basis element $B_Y \in \mathcal{B}_Y$ such that $y \in B_Y \subseteq V$. Thus $(x, y) \in B_X \times B_Y \subseteq W$, and so, $W \in \mathcal{T}'$, cf. [Theorem 4.9](#). By [Theorem 4.10](#), we know that \mathcal{T}' is equal to the collection of all unions of elements of $\mathcal{B}_{X \times Y}$. Hence, if $W \in \mathcal{T}'$ then W equals a union of elements of $\mathcal{B}_{X \times Y}$. Since each element of $\mathcal{B}_{X \times Y}$ belongs to $\mathcal{T}_{X \times Y}$ and $\mathcal{T}_{X \times Y}$ is a topology, W also belongs to $\mathcal{T}_{X \times Y}$. \square

Example 5.9 Let $X = \{a, b, c, d, e\}$ and $Y = \{1, 2, 3\}$ with topologies $\mathcal{T}_X = \{\emptyset, \{a, b\}, \{b\}, \{b, c, d, e\}, X\}$ and $\mathcal{T}_Y = \{\emptyset, \{1\}, \{1, 2\}, Y\}$, respectively. Then the collection

$$\begin{aligned} \mathcal{B}_{X \times Y} = \{ & \{a, b\} \times \{1\}, \{b\} \times \{1\}, \{b, c, d, e\} \times \{1\}, \\ & \{a, b\} \times \{1, 2\}, \{b\} \times \{1, 2\}, \{b, c, d, e\} \times \{1, 2\}, \\ & \{a, b\} \times Y, \{b\} \times Y, \{b, c, d, e\} \times Y \} \end{aligned}$$

is a basis for the product topology on $X \times Y$.

Example 5.10 Let \mathbb{R} denote the set of real numbers equipped with the standard topology, cf. [Exercise 4.2](#). Then the collection

$$\mathcal{B}_{\mathbb{R}^2} = \{(a, b) \times (c, d) \mid a < b, c < d\}$$

of open rectangular regions in \mathbb{R}^2 is a basis for the product topology on $\mathbb{R}^2 = \mathbb{R} \times \mathbb{R}$, since a basis for the standard topology of \mathbb{R} is the collection of open intervals of the form (a, b) where $a < b$.

Example 5.11 Let S^1 denote the circle $\{(x, y) \in \mathbb{R}^2 \mid x^2 + y^2 = 1\}$ seen as a subspace of \mathbb{R}^2 (with the standard topology), i.e., S^1 is given the subspace topology. A basis element B for the product topology on the torus $T^2 = S^1 \times S^1$ is illustrated in Figure 5.2. Note that the surface depicted in Figure 5.2 is *homeomorphic* to T^2 ; it is the surface of revolution generated by revolving a circle, say of radius 1 in the xz -plane with center $(2, 0, 0)$, about an axis, e.g., the z -axis.

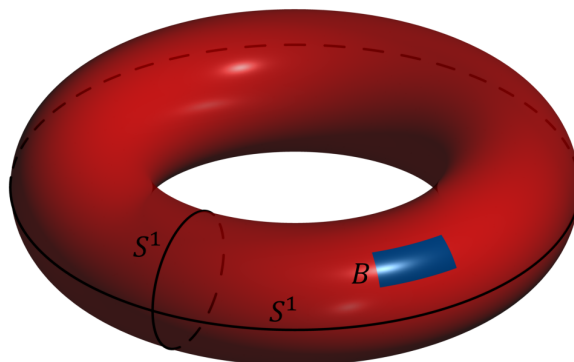


Figure 5.2: An illustration of a basis element B for the product topology on $T^2 = S^1 \times S^1$.

We end this section with an alternative description of the product topology. The map $\pi_1: X \times Y \rightarrow X$ given by

$$\pi_1(x, y) = x$$

for $(x, y) \in X \times Y$ is called the projection of $X \times Y$ onto X . Similarly, the map $\pi_2: X \times Y \rightarrow Y$ given by

$$\pi_2(x, y) = y$$

for $(x, y) \in X \times Y$ is called the projection of $X \times Y$ onto Y .

Theorem 5.12 Let X and Y be topological spaces. Let $\pi_1: X \times Y \rightarrow X$ and $\pi_2: X \times Y \rightarrow Y$ be the projections of $X \times Y$ onto its first and second factors, respectively. The product topology is the only topology on $X \times Y$ with the following universal property: for every topological space Z and every map $f: Z \rightarrow X \times Y$, f is continuous if and only if $\pi_1 \circ f: Z \rightarrow X$ and $\pi_2 \circ f: Z \rightarrow Y$ are continuous.

$$\begin{array}{ccc} & X \times Y & \\ f \nearrow & & \downarrow \pi_1 \\ Z & \xrightarrow{\pi_1 \circ f} & X \end{array} \qquad \begin{array}{ccc} & X \times Y & \\ f \nearrow & & \downarrow \pi_2 \\ Z & \xrightarrow{\pi_2 \circ f} & Y \end{array}$$

Proof. We follow the arguments for the proof of Theorem 5.5 and adapt them to our current setting.

We first prove that the product topology $\mathcal{T}_{X \times Y}$ has the universal property that for every topological space Z and every map $f: Z \rightarrow X \times Y$, f is continuous if and only if $\pi_1 \circ f: Z \rightarrow X$ and $\pi_2 \circ f: Z \rightarrow Y$ are continuous.

Let $X \times Y$ be given the product topology, and let $f: Z \rightarrow X \times Y$ be continuous. Since $\pi_1^{-1}(U) = U \times Y$ for an open set U in X and Y is open in Y , it follows that π_1 is continuous. Likewise, $\pi_2: X \times Y \rightarrow Y$

is continuous. Thus by [Theorem 3.16](#) both $\pi_1 \circ f$ and $\pi_2 \circ f$ are continuous. Now assume that $\pi_1 \circ f$ and $\pi_2 \circ f$ are continuous. Let $U \times V$ be a subset of $X \times Y$ where U is an open set in X and V is an open set in Y . Since $U \times V = \pi_1^{-1}(U) \cap \pi_2^{-1}(V)$ and

$$\begin{aligned} f^{-1}(U \times V) &= f^{-1}(\pi_1^{-1}(U) \cap \pi_2^{-1}(V)) \\ &= f^{-1}(\pi_1^{-1}(U)) \cap f^{-1}(\pi_2^{-1}(V)) \\ &= (\pi_1 \circ f)^{-1}(U) \cap (\pi_2 \circ f)^{-1}(V) \end{aligned}$$

is open in Z by continuity of $\pi_1 \circ f$ and $\pi_2 \circ f$, and subsets of the form $U \times V$ form a basis for the product topology on $X \times Y$, cf. [Lemma 5.7](#), it follows that f is continuous.

Let \mathcal{T} be a topology on $X \times Y$ with the universal property that for every topological space Z and every map $f: Z \rightarrow X \times Y$, f is continuous if and only if $\pi_1 \circ f: Z \rightarrow X$ and $\pi_2 \circ f: Z \rightarrow Y$ are continuous. We must show that $\mathcal{T}_{X \times Y} = \mathcal{T}$.

Let \mathcal{T}_X be the topology on X and \mathcal{T}_Y be the topology on Y , and let $X \times Y$ be given the topology \mathcal{T} . First let $Z = X \times Y$ with the product topology. Then for $f = \text{id}: (X \times Y, \mathcal{T}_{X \times Y}) \rightarrow (X \times Y, \mathcal{T})$, we have $\pi_1 \circ \text{id} = \pi_1: (X \times Y, \mathcal{T}_{X \times Y}) \rightarrow (X, \mathcal{T}_X)$ and $\pi_2 \circ \text{id} = \pi_2: (X \times Y, \mathcal{T}_{X \times Y}) \rightarrow (Y, \mathcal{T}_Y)$ which are both continuous. Thus by the universal property id is continuous.

$$\begin{array}{ccc} & (X \times Y, \mathcal{T}) & \\ \text{id} \nearrow & \downarrow \pi_1 & \\ (X \times Y, \mathcal{T}_{X \times Y}) & \xrightarrow{\pi_1 \circ \text{id}} & (X, \mathcal{T}_X) \end{array} \qquad \begin{array}{ccc} & (X \times Y, \mathcal{T}) & \\ \text{id} \nearrow & \downarrow \pi_2 & \\ (X \times Y, \mathcal{T}_{X \times Y}) & \xrightarrow{\pi_2 \circ \text{id}} & (Y, \mathcal{T}_Y) \end{array}$$

Hence, any $W \in \mathcal{T}$ must also be an element of $\mathcal{T}_{X \times Y}$, and so, $\mathcal{T} \subseteq \mathcal{T}_{X \times Y}$.

Secondly let $Z = X \times Y$ with \mathcal{T} as its topology. Then, clearly, $f = \text{id}: (X \times Y, \mathcal{T}) \rightarrow (X \times Y, \mathcal{T})$ is continuous. Thus by the universal property it follows that both $\pi_1 \circ \text{id} = \pi_1: (X \times Y, \mathcal{T}) \rightarrow (X, \mathcal{T}_X)$ and $\pi_2 \circ \text{id} = \pi_2: (X \times Y, \mathcal{T}) \rightarrow (Y, \mathcal{T}_Y)$ are continuous.

$$\begin{array}{ccc} & (X \times Y, \mathcal{T}) & \\ \text{id} \nearrow & \downarrow \pi_1 & \\ (X \times Y, \mathcal{T}) & \xrightarrow{\pi_1 \circ \text{id}} & (X, \mathcal{T}_X) \end{array} \qquad \begin{array}{ccc} & (X \times Y, \mathcal{T}) & \\ \text{id} \nearrow & \downarrow \pi_2 & \\ (X \times Y, \mathcal{T}) & \xrightarrow{\pi_2 \circ \text{id}} & (Y, \mathcal{T}_Y) \end{array}$$

Thus for each $U \in \mathcal{T}_X$ and $V \in \mathcal{T}_Y$, we have

$$\pi_1^{-1}(U) = U \times Y \in \mathcal{T} \quad \text{and} \quad \pi_2^{-1}(V) = X \times V \in \mathcal{T},$$

and so, $U \times V = \pi_1^{-1}(U) \cap \pi_2^{-1}(V) \in \mathcal{T}$. Hence, $\mathcal{T}_{X \times Y} \subseteq \mathcal{T}$. Thus $\mathcal{T}_{X \times Y} = \mathcal{T}$. \square



We can extend our discussion of the product topology from $X \times Y$ to $X_1 \times X_2 \times \cdots \times X_n$ where each X_i is a topological space. If we are to extend to the product $\prod_{\lambda \in \Lambda} X_\lambda$, which we can think of as the set of maps $f: \Lambda \rightarrow \bigcup_{\lambda \in \Lambda} X_\lambda$ where $f(\lambda) \in X_\lambda$ for each $\lambda \in \Lambda$, of an indexed family $\{X_\lambda\}_{\lambda \in \Lambda}$ of topological spaces we may proceed in two ways. We may equip $\prod_{\lambda \in \Lambda} X_\lambda$ with the topology generated by the basis $\prod_{\lambda \in \Lambda} U_\lambda$ where U_λ is open in X_λ for each $\lambda \in \Lambda$. This is known as the *box topology*. We may also equip $\prod_{\lambda \in \Lambda} X_\lambda$ with the topology generated by the subbasis $\mathcal{S} = \bigcup_{\mu \in \Lambda} \{\pi_\mu^{-1}(U_\mu) \mid U_\mu \text{ is open in } X_\mu\}$. This is known as the *product topology*. For finite products $\prod_{i=1}^n X_i$ the two topologies are the same. Also, the box topology is, in general, finer than the product topology. Finally, several results regarding finite products may be extended to arbitrary products when using the product topology but not the box topology.

5.3 Quotient spaces

Let X be a topological space. In Section 5.1, we discussed how to define the coarsest possible topology on a subset A of X such that the inclusion map $i: A \rightarrow X$ is continuous. This is known as the subspace topology. If we let A be a set which is not necessarily a subset of X and we consider a surjective map $\pi: X \rightarrow A$, the *quotient topology* is the finest topology on A such that π is continuous.

The torus $T^2 = S^1 \times S^1$ (see Figure 5.2) can be constructed by taking a rectangle and “gluing” its edges together in an appropriate way as shown in Figure 5.3. Such a construction involves the concept of quotient topology.

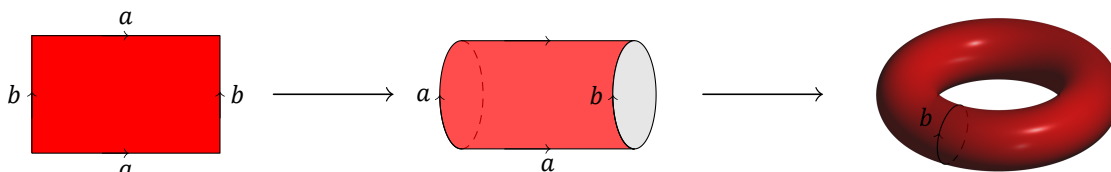


Figure 5.3: Constructing the torus T^2 .

Definition 5.13 (Equivalence classes) Let X be a set, and let \sim be an equivalence relation on X . The *equivalence class* of $x \in X$ is the subset

$$[x] = \{y \in X \mid x \sim y\}$$

of X . Let

$$X/\sim = \{[x] \mid x \in X\}$$

be the set of equivalence classes.

By definition, $x \in [x]$ for each $x \in X$ and $[x] = [y]$ if and only if $x \sim y$. Moreover, two equivalence classes $[x_1]$ and $[x_2]$ are either disjoint or equal. Finally, the union of all equivalence classes equal X .

Lemma 5.14 Let X and A be sets, and let $\pi: X \rightarrow A$ be a surjective map. Then the map

$$\varphi: X/\sim \rightarrow A$$

given by

$$\varphi([x]) = \pi(x),$$

where $x_1 \sim x_2$ if and only if $\pi(x_1) = \pi(x_2)$, is a bijection.

Proof. The map is well-defined since $[x_1] = [x_2]$ only if $x_1 \sim x_2$, and so, $\pi(x_1) = \pi(x_2)$ by definition of the equivalence relation. It is injective since $\varphi([x_1]) = \varphi([x_2])$ implies $\pi(x_1) = \pi(x_2)$, and so, $x_1 \sim x_2$, i.e., $[x_1] = [x_2]$. Finally, it is surjective since π is; every element of A is of the form $\pi(x) = \varphi([x])$ for some $x \in X$. \square

Thus by Lemma 5.14 we can, up to a bijection, go back and forth between equivalence relations on X and surjective maps $X \rightarrow A$.

Definition 5.15 (Quotient space) Let X be a topological space, let A be a set, and let $\pi: X \rightarrow A$ be a surjective map. The *quotient topology on A induced by π* is the collection of subsets U of A such that $\pi^{-1}(U)$ is open in X . We say that π is a *quotient map* if A is given the quotient topology, and we call A the *quotient space*.

In other words, $\pi: X \rightarrow A$ is quotient map if it is surjective and a subset U of A is open in A if and only if $\pi^{-1}(U)$ is open in X . Equivalently, π is a quotient map if it is surjective and U is closed in A if and only if $\pi^{-1}(U)$ is closed in X . Clearly, a quotient map is continuous.

Lemma 5.16 Let X be a topological space, let A be a set, and let $\pi: X \rightarrow A$ be a surjective map. Then the quotient topology on A induced by π is a topology and it is the finest topology on A such that π is continuous.

Proof. Since $\pi^{-1}(\emptyset) = \emptyset$ and $\pi^{-1}(A) = X$, and both \emptyset and X are open in X , it follows that \emptyset and A are open in A . Thus T1 holds.

Let $\{U_\lambda\}_{\lambda \in \Lambda}$ be a collection of subsets of A that are open in A . Then $\pi^{-1}(U_\lambda)$ is open in X for each $\lambda \in \Lambda$. Since

$$\pi^{-1}\left(\bigcup_{\lambda \in \Lambda} U_\lambda\right) = \bigcup_{\lambda \in \Lambda} \pi^{-1}(U_\lambda)$$

is a union of open sets in X , it must be open in X . Hence, $\bigcup_{\lambda \in \Lambda} U_\lambda$ is open in A . Thus T2 is satisfied.

Let U_1 and U_2 be subsets of A that are open in A . Then both $\pi^{-1}(U_1)$ and $\pi^{-1}(U_2)$ are open in X . Since

$$\pi^{-1}(U_1 \cap U_2) = \pi^{-1}(U_1) \cap \pi^{-1}(U_2)$$

is a (finite) intersection of open sets in X , it must be open in X . Hence, $U_1 \cap U_2$ is open in A , and so, T3 is satisfied. Thus the quotient topology is a topology.

Let \mathcal{T} be a topology on A such that π is continuous. We must show that \mathcal{T} is coarser than the quotient topology. Since π is continuous when A is given \mathcal{T} as its topology, we have for each $V \in \mathcal{T}$ that $\pi^{-1}(V)$ is open in X , and so, V is in the quotient topology. Hence, \mathcal{T} is coarser than the quotient topology. \square

Example 5.17 Let \mathbb{R} be the set of real numbers equipped with the standard topology, let $A = \{a, b, c\}$, and let

$$\pi: \mathbb{R} \rightarrow A$$

be the map given by

$$\pi(x) = \begin{cases} a & x = 0, \\ b & x < 0, \\ c & x > 0. \end{cases}$$

Then the quotient topology on A induced by π is the collection $\{\emptyset, \{b\}, \{b, c\}, \{c\}, A\}$ of subsets of A .

Definition 5.18 (Open and closed maps) Let X and Y be topological spaces, and let $f: X \rightarrow Y$ be a continuous map. We say that f is an *open map* if for each subset U of X that is open in X the image $f(U)$ is open in Y . Likewise, we say that f is a *closed map* if for each subset V of X that is closed in X the image $f(V)$ is closed in Y .

Example 5.19 Any homeomorphism is both open and closed. However, the converse is, in general, not true. Let \mathbb{R} be the set of real numbers equipped with the standard topology, and let $*$ be the space consisting of a single element. Then $\mathbb{R} \rightarrow *$ is both an open and a closed map but it is clearly not a homeomorphism.

Lemma 5.20 Let X and Y be topological spaces, and let $\pi: X \rightarrow Y$ be a surjective continuous map.

- (1) If π is in addition open then it is a quotient map.
- (2) If π is in addition closed then it is a quotient map.

Proof. Assume that π is in addition open. Let V be a subset of Y . If V is open in Y then $\pi^{-1}(V)$ is open in X by assumption of continuity of π . If $\pi^{-1}(V)$ is open in X then since π is surjective, we have

$$\pi(\pi^{-1}(V)) = V$$

which is open in Y since we have assumed that π is an open map. Hence, (1) holds.

Now assume that π is also closed in addition to being a surjective continuous map. Let W be a subset of Y . If W is closed in Y then $\pi^{-1}(W)$ is closed in X by assumption of continuity of π . If $\pi^{-1}(W)$ is closed in X then since π is surjective, we have

$$\pi(\pi^{-1}(W)) = W$$

which is closed in Y since we have assumed that π is a closed map. Hence, (2) holds. \square

Example 5.21 Let \mathbb{R} be the set of real numbers equipped with the standard topology. Consider $[0, 1]$ as a subspace of \mathbb{R} and S^1 as a subspace of \mathbb{R}^2 where \mathbb{R}^2 is also given the standard topology. Let

$$\pi: [0, 1] \rightarrow S^1$$

be the map given by

$$\pi(t) = (\cos(2\pi t), \sin(2\pi t)).$$

Then, clearly, π is a surjective continuous map. We can show that π is also closed (to do this it helps to have defined compactness). Thus by [Lemma 5.20](#) π is a quotient map. Note that π is not open as $\pi([0, t))$ is not open for $0 < t < 1$ (where we are using the fact that $[0, t)$ is open in $[0, 1]$ for $0 < t < 1$).

Let \sim be the equivalence relation on $[0, 1]$ given by $s \sim t$ if and only if $\pi(s) = \pi(t)$, and let

$$p: [0, 1] \rightarrow [0, 1]/\sim$$

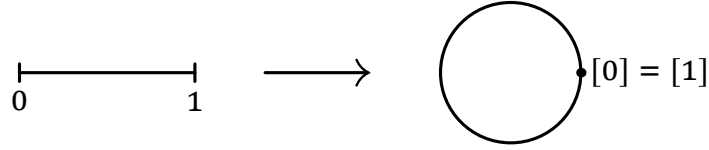
be the map given by

$$p(t) = [t].$$

Then, clearly, p is a surjective continuous map. The induced bijective map

$$\varphi: [0, 1]/\sim \rightarrow S^1$$

given by $\varphi([t]) = \pi(t)$ is then a homeomorphism from $[0, 1]/\sim$ with the quotient topology induced by p to S^1 with the quotient topology induced by π . See [Figure 5.4](#).

Figure 5.4: Constructing the circle S^1 .

Example 5.22 Consider $[0, 1] \times [0, 1]$ as a subspace of $\mathbb{R} \times \mathbb{R} = \mathbb{R}^2$ where \mathbb{R}^2 is given the standard topology, and $T^2 = S^1 \times S^1$ as a subspace of $\mathbb{R}^2 \times \mathbb{R}^2 = \mathbb{R}^4$ where \mathbb{R}^4 is also given the standard topology. Let

$$\pi: [0, 1] \times [0, 1] \rightarrow S^1 \times S^1$$

be the map given by

$$\pi(s, t) = (\cos(2\pi s), \sin(2\pi s), \cos(2\pi t), \sin(2\pi t)).$$

Clearly, π is a surjective continuous function. As in the previous example, we can show that π is closed, and so, by [Lemma 5.20](#) it is a quotient map.

Let \sim be the equivalence relation on $[0, 1] \times [0, 1]$ given by $(s, 0) \sim (s, 1)$ and $(0, t) \sim (1, t)$, and let

$$p: [0, 1] \times [0, 1] \rightarrow ([0, 1] \times [0, 1])/\sim$$

be the map given by

$$p(s, t) = [s, t].$$

Then, clearly, p is a surjective continuous map. The induced bijective map

$$\varphi: ([0, 1] \times [0, 1])/\sim \rightarrow S^1 \times S^1$$

given by $\varphi([s, t]) = \pi(s, t)$ is then a homeomorphism from $([0, 1] \times [0, 1])/\sim$ with the quotient topology induced by p to $S^1 \times S^1$ with the quotient topology induced by π . The equivalence classes are then the sets $\{(0, 0), (0, 1), (1, 0), (1, 1)\}$ (the four vertices of the square are identified), $\{(s, 0), (s, 1)\}$, $\{(0, t), (1, t)\}$ (opposing edges of the square are identified), and $\{(s, t)\}$ for $s, t \in (0, 1)$. See [Figure 5.3](#).

Example 5.23 The *real projective space* is the quotient space

$$\mathbb{R}P^n = S^n/\sim$$

where S^n is the n -sphere and \sim is the equivalence relation given by $x \sim y$ if and only if $x = \pm y$, i.e., $[x] = \{x, -x\}$. We say that x and $-x$ are *antipodal* points. The topology on $\mathbb{R}P^n$ is defined by the quotient map

$$\pi: S^n \rightarrow \mathbb{R}P^n$$

given by $\pi(x) = [x]$.

We end this section with an alternative description of the quotient topology.

Theorem 5.24 *Let X be a topological space, let A be a set, and let $\pi: X \rightarrow A$ be a surjective map. The quotient topology is the only topology on A with the following universal property: for every topological space Y and every map $f: A \rightarrow Y$, f is continuous if and only if $f \circ \pi: X \rightarrow Y$ is continuous.*

$$\begin{array}{ccc} X & & \\ \pi \downarrow & \searrow f \circ \pi & \\ A & \xrightarrow{f} & Y \end{array}$$

Proof. We follow the arguments for the proofs of [Theorem 5.5](#) and [Theorem 5.12](#) and adapt them to our current setting.

We first prove that the quotient topology \mathcal{T}^π has the universal property that for every topological space Y and every map $f: A \rightarrow Y$, f is continuous if and only if $f \circ \pi: X \rightarrow Y$ is continuous.

Let A be given the quotient topology induced by π , and assume that $f: A \rightarrow Y$ is continuous. By definition of the quotient topology $\pi^{-1}(U)$ is open in X if and only if U is open in A . Hence, π is continuous. Thus by [Theorem 3.16](#) $f \circ \pi: X \rightarrow Y$ is continuous. Now assume that $f \circ \pi: X \rightarrow Y$ is continuous. Let V be an open set in Y . Since π is a quotient map and $(f \circ \pi)^{-1}(V) = \pi^{-1}(f^{-1}(V))$ is open in X by assumption of continuity of $f \circ \pi$, it follows that $f^{-1}(V)$ is open in A . Thus f is continuous.

Let \mathcal{T}' be a topology on A with the universal property that for every topological space Y and every map $f: A \rightarrow Y$, f is continuous if and only if $f \circ \pi: X \rightarrow Y$ is continuous. We must show that $\mathcal{T}' = \mathcal{T}^\pi$.

Let \mathcal{T} be the topology on X , and let A be given the topology \mathcal{T}' . First let $Y = A$ with the quotient topology induced by $f \circ \pi$. Then for $f = \text{id}: (A, \mathcal{T}') \rightarrow (A, \mathcal{T}^\pi)$, we have $\text{id} \circ \pi = \pi: (X, \mathcal{T}) \rightarrow (A, \mathcal{T}^\pi)$ which is continuous. Hence, by the universal property id is continuous.

$$\begin{array}{ccc} (X, \mathcal{T}) & & \\ \pi \downarrow & \searrow \text{id} \circ \pi & \\ (A, \mathcal{T}') & \xrightarrow{\text{id}} & (A, \mathcal{T}^\pi) \end{array}$$

Thus any $V \in \mathcal{T}^\pi$ must also be an element of \mathcal{T}' , and so, $\mathcal{T}^\pi \subseteq \mathcal{T}'$.

Secondly let $Y = A$ with \mathcal{T}' as its topology. Then, clearly, $f = \text{id}: (A, \mathcal{T}') \rightarrow (A, \mathcal{T}')$ is continuous. Thus by the universal property it follows that $\text{id} \circ \pi = \pi: (X, \mathcal{T}) \rightarrow (A, \mathcal{T}')$ is continuous.

$$\begin{array}{ccc} (X, \mathcal{T}) & & \\ \pi \downarrow & \searrow \text{id} \circ \pi & \\ (A, \mathcal{T}') & \xrightarrow{\text{id}} & (A, \mathcal{T}') \end{array}$$

Since the quotient topology induced by π is the finest topology on A such that π is a continuous map, cf. [Lemma 5.16](#), it follows that $\mathcal{T}' \subseteq \mathcal{T}^\pi$. Hence, $\mathcal{T}' = \mathcal{T}^\pi$. \square

5.4 Exercises

Exercise 5.1 Let \mathbb{R} be the set of real numbers equipped with the standard topology. Show that any subspace of the form (a, b) , i.e., an open interval, is homeomorphic to \mathbb{R} .

Exercise 5.2 Let X be a topological space and let Y be a subspace of X . If A is a subset of Y , show that the subspace topology on A inherited from Y is equal to the subspace topology on A inherited from X .

Exercise 5.3 Let \mathbb{R} be the set of real numbers equipped with the standard topology, and consider the set of rational numbers \mathbb{Q} as a subspace of \mathbb{R} . Show that the subset

$$A = \{x \in \mathbb{Q} \mid -\sqrt{5} < x < \sqrt{5}\}$$

of \mathbb{Q} is both open and closed in \mathbb{Q} .

Exercise 5.4 Let $X = \{a, b, c, d\}$ be given the topology $\mathcal{T}_X = \{\emptyset, \{a\}, \{a, c, d\}, \{c, d\}, X\}$, and let $Y = \{1, 2, 3\}$ be given the topology $\mathcal{T}_Y = \{\emptyset, \{1\}, \{1, 3\}, Y\}$. Find a basis for the product topology on $X \times Y$.

Exercise 5.5 Let X and Y be topological spaces, and let A and B be subsets of X and Y , respectively. Show that the topology on $A \times B$ as a subspace of the product $X \times Y$ is equal to the product topology on $A \times B$ where A and B are given the subspace topology inherited from X and Y , respectively.

Exercise 5.6 Let X and Y be topological spaces. Show that the product topology is the coarsest topology on $X \times Y$ for which both of the projection maps $\pi_1: X \times Y \rightarrow X$ and $\pi_2: X \times Y \rightarrow Y$ are continuous.

Exercise 5.7 Let X and Y be two topological spaces, and let $X \times Y$ be given the product topology. Show that if $f: X \rightarrow Y$ is a continuous map, the subspace

$$G = \{(x, y) \in X \times Y \mid y = f(x)\}$$

of $X \times Y$, is homeomorphic to X .

Exercise 5.8 Let \mathbb{R} be the set of real numbers equipped with the standard topology. Let

$$\pi: \mathbb{R} \rightarrow \mathbb{Z}$$

be the map given by

$$\pi(x) = \begin{cases} x & x \in \mathbb{Z} \\ n & x \in (n - 1, n + 1), \text{ and } n \text{ is an odd integer.} \end{cases}$$

Show that the quotient topology on \mathbb{Z} induced by π is equal to the digital line topology, cf. [Exercise 4.6](#).

6. Topological properties

6.1 Connected spaces

One of the fundamental results of calculus is the *intermediate value theorem*. The theorem says that for a continuous map $f: [a, b] \rightarrow \mathbb{R}$ and for a real number r between $f(a)$ and $f(b)$ there is a real number $c \in [a, b]$ such that $f(c) = r$. See Figure 6.1. From this result we can deduce that the graph of a continuous map (in this setting) is connected.

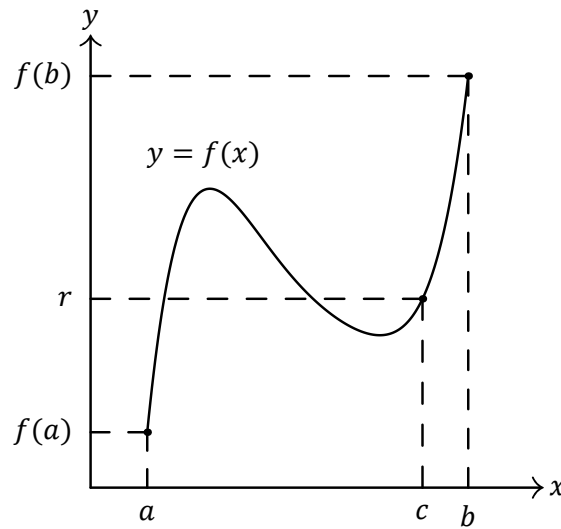


Figure 6.1: The intermediate value theorem.

Definition 6.1 (Connected space) Let X be a topological space. A *separation* of X is a pair of non-empty subsets U and V that are open in X , disjoint and whose union equal X . We say that X is *connected* if there are no separations of X . Otherwise it is *disconnected*.

The property of being connected is a topological property as it is formulated entirely in terms of the collection of open sets. In other words, if X and Y are homeomorphic topological spaces and X is connected then so is Y .



Example 6.2 Let X be the set $\{a, b, c, d, e\}$. If we equip X with the topology $\mathcal{T}_1 = \{\emptyset, \{a, b\}, \{a, b, c\}, \{a, b, d, e\}, \{d, e\}, X\}$ then it is disconnected; the pair $U = \{a, b, c\}$ and $V = \{d, e\}$ is a separation of X in this topology.

However, if we equip X with the topology $\mathcal{T}_2 = \{\emptyset, \{a, b, c\}, \{c\}, \{c, d, e\}, X\}$ then it is connected; there are no separations of X in this topology.

Example 6.3 Let X be an indiscrete space. Then X is connected as there are no separations of X , i.e., there are no non-empty open subsets of X who are disjoint and whose union equal X .

Example 6.4 Let X be a discrete space containing two or more points. Then X is disconnected. Let $p \in X$ and let $U = \{p\}$ and $V = U^c = X \setminus \{p\}$. Then the pair U and V is a separation of X .

Example 6.5 Let \mathbb{R} be the set of real numbers equipped with the standard topology, and let $X = [0, 1) \cup (1, 2)$ be a subspace of \mathbb{R} . Since $U = [0, 1)$ is open in X (but not in \mathbb{R}) and $V = (1, 2)$ is open in X , $U \cap V = \emptyset$ and $U \cup V = X$, they form a separation of X . Thus X is disconnected.

In the above examples the spaces that are connected all share the property that the only subsets that are both open and closed in X are \emptyset and X . Likewise, the disconnected spaces all share the property that there are non-empty proper subsets of X that are both open and closed in X .

Theorem 6.6 *Let X be a topological space. Then X is connected if and only if there are no non-empty proper subsets of X that are both open and closed in X .*

Proof. We prove the equivalent statement that X is disconnected if and only if there are non-empty proper subsets of X that are both open and closed in X .

Assume X is disconnected, i.e., that there is a separation of X . Let U and V be a separation of X . Thus U is open in X . Since $U \cap V = \emptyset$ and $U \cup V = X$, we have $U^c = X \setminus U = V$. Thus U^c is open in X , and so, U is closed in X . Hence, U is both open and closed in X . Likewise, V is both open and closed in X .

Assume that the non-empty proper subset U of X is both open and closed in X . Let $V = U^c = X \setminus U$. Then V is open in X , $U \cap V = \emptyset$ and $U \cup V = X$. Hence, the pair U and V is a separation of X . Thus X is disconnected. \square

Theorem 6.7 *Let X be a connected space, Y be a topological space, and let $f: X \rightarrow Y$ be a surjective continuous map. Then Y is connected.*

Proof. We prove the equivalent statement that if $f: X \rightarrow Y$ is a surjective continuous map and Y is disconnected then X is disconnected.

Assume that Y is disconnected, i.e., there is a separation of Y . Let the pair U and V be a separation of Y . Then $f^{-1}(U)$ and $f^{-1}(V)$ are non-empty subsets of X which are open in X as f is a surjective continuous map. Furthermore,

$$f^{-1}(U) \cap f^{-1}(V) = f^{-1}(U \cap V) = \emptyset \quad \text{and} \quad f^{-1}(U) \cup f^{-1}(V) = f^{-1}(U \cup V) = X.$$

Hence, the pair $f^{-1}(U)$ and $f^{-1}(V)$ is a separation of X . Thus X is disconnected. \square



A subset A of a topological space Z is *connected* in Z if A is connected in the subspace topology. Thus the theorem can be extended to saying that the continuous image of a connected space is connected, i.e., assuming X is a connected space and $f: X \rightarrow Y$ is a continuous map then $f(X)$ is connected in Y .

We will prove that the (finite) product of connected spaces is again connected. To prove this we will need the following two results.

Lemma 6.8 *Let X be a disconnected space with separation U and V , and let A be a connected subspace of X . Then $A \subseteq U$ or $A \subseteq V$.*

Proof. Since U and V are open in X , the intersections $A \cap U$ and $A \cap V$ are both open in A (in the subspace topology). Furthermore, the complement of $A \cap U$ in A is equal to $A \cap V$ as $U^c = X \setminus U = V$. Hence, $A \cap U$ is also closed in A . Thus by [Theorem 6.6](#) $A \cap U$ is either empty or all of A as A is connected. If $A \cap U = \emptyset$ then $A \subseteq V$. If $A \cap U = A$ then $A \subseteq U$. \square

Theorem 6.9 *Let X be a topological space, and let $\{A_\lambda\}_{\lambda \in \Lambda}$ be a collection of connected subspaces of X such that $\bigcap_{\lambda \in \Lambda} A_\lambda$ is non-empty. Then $\bigcup_{\lambda \in \Lambda} A_\lambda$ is connected.*

Proof. Let $Y = \bigcup_{\lambda \in \Lambda} A_\lambda$. Suppose that Y is disconnected, i.e., that there is a separation of Y . Let U and V be a separation of Y . We will show that this leads to a contradiction, and so, Y must be connected.

Let $p \in \bigcap_{\lambda \in \Lambda} A_\lambda$. Then either $p \in U$ or $p \in V$. Assume without loss of generality that $p \in U$. By [Lemma 6.8](#) it follows that for each $\lambda \in \Lambda$ either $A_\lambda \subseteq U$ or $A_\lambda \subseteq V$. Since we have assumed that $p \in U$ we must have $A_\lambda \subseteq U$ for all $\lambda \in \Lambda$. Thus $Y \subseteq U$. But this implies that V is empty, and hence, contradicts that U and V is a separation of Y . Thus Y is connected. \square

We can prove that the (finite) product of connected spaces is again connected.

Theorem 6.10 *Let X_1, X_2, \dots, X_n be connected spaces. Then the product space $X_1 \times X_2 \times \dots \times X_n$ is connected.*

Proof. We prove the statement for the product of two connected spaces. The general result then follows by an induction argument.

Let X and Y be two connected spaces. We must prove that $X \times Y$ is connected. Since for each $x \in X$ the subspace $\{x\} \times Y$ of $X \times Y$ is homeomorphic to Y , it follows that $\{x\} \times Y$ is connected. Similarly, for each $y \in Y$ the subspace $X \times \{y\}$ is homeomorphic to X , and hence, $X \times \{y\}$ is connected. Thus by [Theorem 6.9](#) it follows that for each $x \in X$ and each $y \in Y$ the subspace $(\{x\} \times Y) \cup (X \times \{y\})$ is connected as it is the union of two connected spaces whose intersection is $(\{x\} \times Y) \cap (X \times \{y\}) = \{(x, y)\} \neq \emptyset$.

Fix $x_0 \in X$ and let $A_y = (\{x_0\} \times Y) \cup (X \times \{y\})$. Then for each $y \in Y$ the subspace A_y of $X \times Y$ is connected as it is the union of two connected spaces whose intersection is equal to $\{(x_0, y)\}$. Hence, by [Theorem 6.9](#) it follows that $\bigcup_{y \in Y} A_y$ is connected as it is the union of connected spaces whose intersection is non-empty. Since

$$\bigcup_{y \in Y} A_y = X \times Y,$$

it follows that $X \times Y$ is connected. \square

The theorem can be extended to hold for arbitrary products, $\prod_{\lambda \in \Lambda} X_\lambda$, if we equip the product with the product topology. If we equip $\prod_{\lambda \in \Lambda} X_\lambda$ with the box topology the statement is no longer true.



An important example of a connected space is the set of real numbers equipped with the standard topology.

Theorem 6.11 (The real numbers are connected) *Let \mathbb{R} be the set of real numbers equipped with the standard topology. Then \mathbb{R} is connected.*

We will use the fact that the real numbers satisfy the following two properties.

- (1) Every subset of \mathbb{R} that is bounded above has a least upper bound. This is known as the *least upper bound property*.
- (2) If $x, y \in \mathbb{R}$ with $x < y$ then there is a real number z such that $x < z < y$.

Proof. Assume that \mathbb{R} is disconnected, i.e., that there is a separation of \mathbb{R} . Let U and V be a separation of \mathbb{R} , and choose $a \in U$ and $b \in V$. We may assume without loss of generality that $a < b$.

Let $A = [a, b] \cap U$ and $B = [a, b] \cap V$. Then the pair A and B is a separation of $[a, b]$, with $a \in A$ and $b \in B$. Also note that A is bounded above by b . Hence, by the least upper bound property A has a least upper bound; $c = \sup A$. Thus $a \leq c \leq b$. We will show that c belongs neither to A nor to B thus contradicting the fact that A and B is a separation of $[a, b]$.

Assume that $c \in B$. Since $a \notin B$ and B is open in $[a, b]$, it follows that there is a real number d such that $a < d < c$ and $(d, c] \subseteq B$. This implies that d is an upper bound of A and that d is less than the least upper bound c . That is a contradiction, and so, $c \notin B$.

Now assume that $c \in A$. Since A is open in $[a, b]$ and $b \notin A$, there is a real number d such that $[c, d) \subseteq A$. For any $e \in (c, d)$ it follows that $e \in A$ and $e > c$. That is a contradiction to the fact that c is an upper bound of A . Thus $c \notin A$.

Hence, $c \notin A$ and $c \notin B$. This is a contradiction to the fact that $c \in [a, b]$ and that A and B is a separation of $[a, b]$. Thus \mathbb{R} must be connected. \square

As an immediate consequence of [Theorem 6.11](#), we get that open intervals of the form (a, b) , $(-\infty, b)$ and (a, ∞) are all connected as they are all homeomorphic to \mathbb{R} (with the standard topology). We can also show that every closed interval $[a, b]$ is connected. Furthermore, by [Theorem 6.10](#) and [Theorem 6.11](#) \mathbb{R}^n is a connected space.

We can now prove a generalized version of the intermediate value theorem.

Theorem 6.12 (Generalized intermediate value theorem) *Let X be a connected space, and let $f: X \rightarrow \mathbb{R}$ be a continuous map where \mathbb{R} is given the standard topology. If $a, b \in X$ and if r is a real number that lies between $f(a)$ and $f(b)$, there is a $c \in X$ such that $f(c) = r$.*

Proof. Assume that $r \notin f(X)$. We will show that this contradicts the assumption that X is connected. By assumption that $r \notin f(X)$,

$$U = f^{-1}((-\infty, r)) \quad \text{and} \quad V = f^{-1}((r, \infty))$$

are disjoint non-empty open subsets of X whose union equals X . Thus they are a separation of X . This contradicts the assumption that X is connected. Hence, $r \in f(X)$. In other words, there is a $c \in X$ such that $f(c) = r$. \square

We end this section with a discussion of path connectivity.

Definition 6.13 (Path connected space) Let X be a topological space, and let $x, y \in X$. A *path* from x to y is a continuous map $f: [a, b] \rightarrow X$ such that $f(a) = x$ and $f(b) = y$ where $[a, b]$ is a subspace of \mathbb{R} with the standard topology. We say that X is *path connected* if every pair of points of X can be joined by a path in X .

Example 6.14 Let \mathbb{R} be the set of real numbers equipped with the standard topology. Then \mathbb{R} is path connected as for any two points, $p, q \in \mathbb{R}$, there is a path from p to q in \mathbb{R} , e.g., the path given by $f(t) = (1 - t)p + tq$ where $t \in [0, 1]$.

Example 6.15 For all $n \geq 2$, \mathbb{R}^n with the standard topology is path connected, and so is $\mathbb{R}^n \setminus \{p\}$ for each $p \in \mathbb{R}^n$. For $n = 1$, $\mathbb{R} \setminus \{p\}$ is not (path) connected.

The next theorem states that path connectedness implies connectedness. While the converse is not true in general, it can be shown that open subsets of \mathbb{R}^n that are connected are also path connected.

Theorem 6.16 (Path connectedness implies connectedness) Let X be a path connected space. Then X is connected.

Proof. Assume that X is path connected but that X is disconnected, i.e., there is a separation of X . Let U and V be a separation of X . Let $f: [a, b] \rightarrow X$ be a path from $x \in U$ to $y \in V$. Then $f^{-1}(U)$ and $f^{-1}(V)$ are disjoint non-empty open subsets of $[a, b]$ whose union is equal to $[a, b]$. Thus they are a separation of $[a, b]$. This is a contradiction to the fact that $[a, b]$ is a connected space. \square

Example 6.17 (The topologist's sine curve) The *topologist's sine curve* is the subspace

$$S = \left\{ \left(x, \sin\left(\frac{1}{x}\right) \right) \mid 0 < x \leq 1 \right\} \cup \{(0, y) \mid -1 \leq y \leq 1\}$$

of \mathbb{R}^2 with the standard topology. It can be shown that S is connected but not path connected. See Figure 6.2.

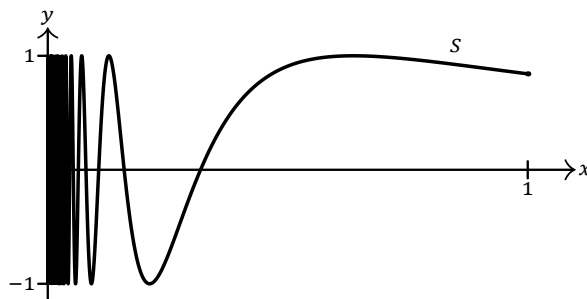


Figure 6.2: The topologist's sine curve.

6.2 Hausdorff spaces

A common feature that we typically want a topological space to have is the ability to separate the individual points. This is commonly referred to as *separation axioms*. We will in this section focus on the most common separation axiom.

Definition 6.18 Let X be a topological space. We say that X is *Hausdorff* if for each pair of points $x, y \in X$, with $x \neq y$, there are disjoint neighborhoods U and V of x and y , respectively. In other words, for each pair of distinct points $x, y \in X$ there are open subsets U and V of X with $x \in U$ and $y \in V$ where $U \cap V = \emptyset$.



The property to be a Hausdorff space is completely described using the elements of X and its open sets, and so, it is a topological property. In other words, if X and Y are homeomorphic topological spaces and X is Hausdorff then so is Y .

Example 6.19 Let X be the set $\{a, b, c\}$. If we equip X with the discrete topology then X is Hausdorff since for all pairs of distinct points $x, y \in X$, the open subsets $\{x\}$ and $\{y\}$ are neighborhoods of x and y , respectively, and $\{x\} \cap \{y\} = \emptyset$.

However, if we equip X with the topology $\{\emptyset, \{a, b\}, \{b\}, X\}$ it is *not* Hausdorff; the only neighborhood of c is $U = X$, and no neighborhood V of either a or b can be disjoint from X .

Example 6.20 Let X be a set, and let \mathcal{T}_1 and \mathcal{T}_2 be two topologies on X . If \mathcal{T}_2 is finer than \mathcal{T}_1 and X equipped with \mathcal{T}_1 as its topology is Hausdorff then X equipped with \mathcal{T}_2 as its topology is also Hausdorff.

Theorem 6.21 Every metric space is Hausdorff.

Proof. Let (X, d) be a metric space, and let x and y be two distinct points in X . We must show that there are disjoint neighborhoods U and V of x and y , respectively.

Let $\delta = d(x, y)$. Then $\delta > 0$. Let $U = B(x; \delta/2)$ and $V = B(y; \delta/2)$ be neighborhoods of x and y , respectively. Then by M3, $U \cap V = \emptyset$. \square

Example 6.22 For all integers $n \geq 1$, the metric space (\mathbb{R}^n, d) is Hausdorff. In particular, \mathbb{R}^n with the standard topology is Hausdorff.

All Hausdorff spaces share the property that finite subsets are closed which is an immediate consequence of the following theorem.

Theorem 6.23 Let X be a Hausdorff space. Then for each $x \in X$ the subset $\{x\}$ of X is closed in X .

Proof. Let $x, y \in X$ with $x \neq y$. Since X is Hausdorff, we have neighborhoods U and V of x and y , respectively, such that $U \cap V = \emptyset$. Then $x \notin V$. In other words, $x \in V^c = X \setminus V$. Since V is open, V^c is closed in X . Thus $\{x\} \subseteq V^c$, and hence, $y \notin \overline{\{x\}}$. Hence, $\{x\} = \overline{\{x\}}$. Thus $\{x\}$ is closed in X . \square

There are examples of topological spaces who are not Hausdorff but have the property that finite subsets are closed. One such example is the set of real numbers equipped with the cofinite topology.

We have seen that the (finite) product of connected spaces is connected, cf. [Theorem 6.10](#). The same statement holds for Hausdorff spaces, i.e., the (finite) product of Hausdorff spaces is Hausdorff.

Theorem 6.24 *Let X_1, X_2, \dots, X_n be Hausdorff spaces. Then the product space $X_1 \times X_2 \times \dots \times X_n$ is Hausdorff.*

Proof. We prove the statement for two Hausdorff spaces. The general result then follows from an induction argument.

Let (x_1, y_1) and (x_2, y_2) be two distinct points in $X \times Y$, i.e., $x_1 \neq x_2$ or $y_1 \neq y_2$. If $x_1 \neq x_2$ there must be neighborhoods U_X and V_X in X of x_1 and x_2 , respectively, such that $U_X \cap V_X = \emptyset$ as X is assumed to be Hausdorff. Then $U_X \times Y$ and $V_X \times Y$ are neighborhoods of (x_1, y_1) and (x_2, y_2) , respectively, where $(U_X \times Y) \cap (V_X \times Y) = \emptyset$. Similarly, if $y_1 \neq y_2$ there must be neighborhoods U_Y and V_Y in Y of y_1 and y_2 , respectively, such that $U_Y \cap V_Y = \emptyset$ as Y is assumed to be Hausdorff. Then $X \times U_Y$ and $X \times V_Y$ are neighborhoods of (x_1, y_1) and (x_2, y_2) , respectively, where $(X \times U_Y) \cap (X \times V_Y) = \emptyset$. Hence, $X \times Y$ is Hausdorff. \square

The theorem be extended to hold for arbitrary products, $\prod_{\lambda \in \Lambda} X_\lambda$, if we equip the product with either the product topology or the box topology.



We end this section with a result that helps us decide whether or not a topological space is Hausdorff.

Theorem 6.25 *Let X be a topological space. Then X is Hausdorff if and only if the diagonal $\Delta = \{(x, x) \mid x \in X\}$ is closed in the product space $X \times X$.*

Proof. Assume that X is a Hausdorff space. Thus for any two distinct points x and y in X there are neighborhoods U and V of x and y , respectively, such that $U \cap V = \emptyset$. Thus $U \times V$ is open in $X \times X$ and $(x, y) \in U \times V$, and so, $(U \times V) \cap \Delta = \emptyset$. Hence, there is a neighborhood $N_{(x,y)}$ of (x, y) such that $N_{(x,y)} \subseteq \Delta^c = (X \times X) \setminus \Delta$. Thus by [Theorem 3.10](#), it follows that Δ^c is open in $X \times X$, and so, Δ is closed in $X \times X$.

Now assume that Δ is closed in the product space $X \times X$. Then for any point $(x, y) \in X \times X$ with $x \neq y$, i.e., $(x, y) \in \Delta^c$, there is a basis element $U \times V$ for the product topology on $X \times X$ such that $(x, y) \in U \times V \subseteq \Delta^c$. Since $U \times V \subseteq \Delta^c$, we have $U \cap V = \emptyset$. Thus U and V are neighborhoods of x and y , respectively, such that $U \cap V = \emptyset$. Hence, X is Hausdorff. \square

6.3 Compact spaces

In [Section 6.1](#) we saw how the intermediate value theorem might be generalized to connected spaces. In this section we will see how the *extreme value theorem* may be generalized to compact spaces. The extreme value theorem says that for a continuous map $f: [a, b] \rightarrow \mathbb{R}$ there are points $m, M \in [a, b]$ such that $f(m) \leq f(x) \leq f(M)$ for all $x \in [a, b]$. See [Figure 6.3](#).

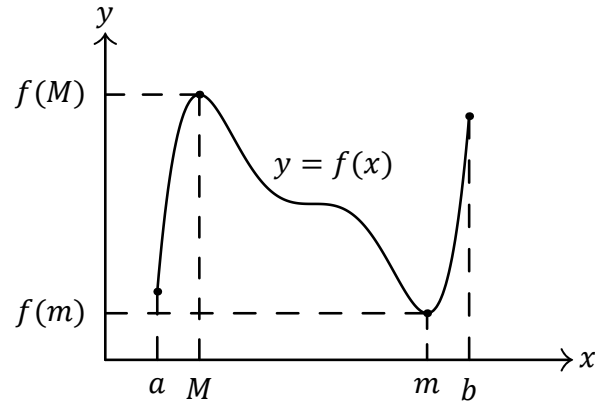


Figure 6.3: The extreme value theorem.

Definition 6.26 (Cover of a space) Let X be a topological space, and let \mathcal{A} be a collection of subsets of X . We say that \mathcal{A} is a *cover* of X , or *covering* of X if $X = \bigcup_{A \in \mathcal{A}} A$. If A is also open in X for each $A \in \mathcal{A}$, we say that \mathcal{A} is an *open cover* of X , or *open covering* of X . We say that \mathcal{A}' is a *subcover* of \mathcal{A} if \mathcal{A}' is another cover of X that satisfies $\mathcal{A}' \subseteq \mathcal{A}$.

Example 6.27 Let X be a topological space, and let \mathcal{B} be a basis for the topology on X . Then \mathcal{B} is an open cover of X . Similarly, if \mathcal{S} is a subsbasis for the topology on X , then \mathcal{S} is an open cover of X .

Definition 6.28 (Compact spaces) Let X be a topological space. We say that X is *compact* if every open cover \mathcal{A} of X contains a finite subcover.



Similarly to connectedness, the property of being compact is a topological property as it is formulated entirely in terms of the collection of open sets. In other words, if X and Y are homeomorphic topological spaces and X is compact then so is Y .

Example 6.29 Let X be a finite topological space. Then X is compact as there are only finitely many different open subsets A of X , and so, any collection covering X must necessarily be finite.

Example 6.30 Let X be an indiscrete space. Then X is compact as the only open covers are the collections $\{X\}$ and $\{\emptyset, X\}$ which are finite.

Example 6.31 Let \mathbb{R} be the set of real numbers equipped with the standard topology. Since the open cover

$$\mathcal{A} = \{(n-1, n+1) \mid n \in \mathbb{Z}\},$$

does not admit a finite subcover, \mathbb{R} is *not* compact.

Definition 6.32 (Compact subspaces) Let X be a topological space, and let A be a subset of X . We say that A is *compact* if A is compact in the subspace topology.

If A is a subspace of X , a collection \mathcal{A} of subsets of X is a *cover* of A if the union of elements of \mathcal{A} contains A .

Lemma 6.33 Let X be a topological space, and let A be a subspace of X . Then A is compact if and only if every cover of A by open subsets of X contains a finite subcollection that covers A .

Proof. Assume that A is compact. Let \mathcal{C} be a cover of A by open subsets of X . Then the collection

$$\mathcal{C}' = \{A \cap U \mid U \in \mathcal{C}\}$$

is an open cover of A . Since A is compact there must be a finite subcover $\{A \cap U_1, A \cap U_2, \dots, A \cap U_n\}$ of \mathcal{C}' . Hence, $\{U_1, U_2, \dots, U_n\}$ is a finite subcollection of \mathcal{C} that covers A .

Now assume that every cover of A by open subsets of X contains a finite subcollection that covers A . Let $\mathcal{C} = \{V_\lambda\}_{\lambda \in \Lambda}$ be a cover of A by open subsets of A . Hence, by definition of the subspace topology, cf. Definition 5.1, we have for each $\lambda \in \Lambda$ that $V_\lambda = A \cap U_\lambda$ where U_λ is an open subset of X . Thus the collection $\mathcal{C}' = \{U_\lambda\}_{\lambda \in \Lambda}$ is a cover of A by open subsets of X . Then, by assumption, there must be a finite subcollection $\{U_{\lambda_1}, U_{\lambda_2}, \dots, U_{\lambda_n}\}$ that covers A . Hence, $\{V_{\lambda_1}, V_{\lambda_2}, \dots, V_{\lambda_n}\}$ is a finite subcover of \mathcal{C} . Thus every cover of A by open subsets of A has a finite subcover, and so, A is compact. \square

The following two theorems indicates that being compact and being closed are closely related properties.

Theorem 6.34 Let X be a compact space, and let A be a closed subset of X . Then A is compact.

Proof. Let \mathcal{C} be a cover of A , i.e., $A \subseteq \bigcup_{C \in \mathcal{C}} C$, by open subsets of X . Since A is closed in X , $A^c = X \setminus A$ is open in X . Thus

$$\mathcal{A} = \mathcal{C} \cup \{A^c\}$$

is an open cover of X . Since X is compact there must be a finite subcover $\mathcal{A}' \subseteq \mathcal{A}$ of X . If \mathcal{A}' contains A^c , let $\mathcal{A}'' = \mathcal{A}' \setminus \{A^c\}$. Then \mathcal{A}'' is a finite subcover of \mathcal{C} that covers A . If \mathcal{A}' does not contain A^c then \mathcal{A}' is a finite subcover of \mathcal{C} that covers A . Either way there is a finite subcover of \mathcal{C} that covers A . Thus A is compact. \square

Theorem 6.35 Let X be a Hausdorff space, and let K be a subset of X which is compact. Then K is closed in X .

Proof. We show that $K^c = X \setminus K$ is open in X . Let $x \in K^c$. Then for each $y \in K$ there are neighborhoods U_y and V_y of x and y , respectively, such that $U_y \cap V_y = \emptyset$, since X is assumed to be Hausdorff and $x \neq y$.

The collection $\mathcal{C} = \{V_y \mid y \in K\}$ of open subsets of X covers K since

$$K \subseteq \bigcup_{y \in K} V_y.$$

Since K is assumed to be compact there must be a finite subcollection $\{V_{y_1}, V_{y_2}, \dots, V_{y_n}\}$ that covers K . Let $V = V_{y_1} \cup V_{y_2} \cup \dots \cup V_{y_n}$, and let $U = U_{y_1} \cap U_{y_2} \cap \dots \cap U_{y_n}$. Then U is open in X , $x \in U$ and $U \cap V = \emptyset$. Furthermore, $U \subseteq X \setminus V \subseteq X \setminus K = K^c$. Hence, K^c is open in X . \square

Theorem 6.36 *Let X be a compact space, Y a topological space and let $f: X \rightarrow Y$ be a surjective continuous map. Then Y is compact.*

Proof. Let $\mathcal{C} = \{U_\lambda\}_{\lambda \in \Lambda}$ be an open cover of Y . Then $\mathcal{A} = \{f^{-1}(U_\lambda)\}_{\lambda \in \Lambda}$ is an open cover of X . Since X is compact there must be a finite subcover $\mathcal{A}' = \{f^{-1}(U_{\lambda_1}), f^{-1}(U_{\lambda_2}), \dots, f^{-1}(U_{\lambda_n})\}$ of \mathcal{A} . Then $\mathcal{C}' = \{U_{\lambda_1}, U_{\lambda_2}, \dots, U_{\lambda_n}\}$ is a finite subcover of \mathcal{C} . Hence, Y is compact. \square



The theorem can be extended to saying that the continuous image of a compact space is compact, i.e., assuming X is a compact space and $f: X \rightarrow Y$ is a continuous map then $f(X)$ is compact.

We will prove that the (finite) product of compact spaces is compact. To prove this we need the following result.

Lemma 6.37 (Tube lemma) *Let X be a topological space, and let Y be a compact space. If $x \in X$ and U is an open set in the product space $X \times Y$ containing $\{x\} \times Y$, then there is a neighborhood W of x in X such that $W \times Y \subseteq U$.*

The set $W \times Y$ is often called a *tube* about $\{x\} \times Y$. See Figure 6.4.

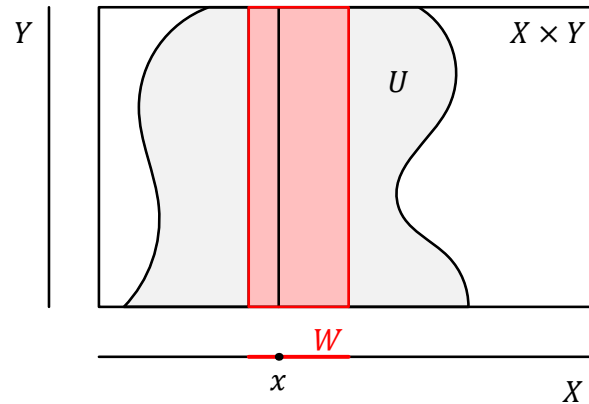


Figure 6.4: A tube about $\{x\} \times Y$.

Proof. As U is open in $X \times Y$ and $(x, y) \in \{x\} \times Y \subseteq U$ for all $y \in Y$, there is a basis element $W_y \times V_y \subseteq U$ for the product topology on $X \times Y$ such that $(x, y) \in W_y \times V_y$. The collection $\{V_y\}_{y \in Y}$ is an open cover of Y . Since Y is compact there must be a finite subcover of $\{V_y\}_{y \in Y}$, say, $\{V_{y_1}, V_{y_2}, \dots, V_{y_n}\}$.

Let

$$W = \bigcap_{i=1}^n W_{y_i}.$$

Then W is open in X , and it must contain x . Clearly,

$$W \times Y \subseteq \bigcup_{i=1}^n (W_{y_i} \times V_{y_i}) \subseteq U.$$

Thus $\{x\} \times Y \subseteq W \times Y$ and $W \times Y \subseteq U$. □

The lemma is not true if we remove the assumption that Y is compact; the open set

$$U = \{(x, y) \in \mathbb{R} \times \mathbb{R} \mid |xy| < 1\} \subseteq \mathbb{R} \times \mathbb{R}$$

does contain $\{0\} \times \mathbb{R}$ but does not contain any tube $W \times \mathbb{R}$ containing $\{0\} \times \mathbb{R}$. (Here we have assumed that \mathbb{R} is given the standard topology, and hence, it is not compact, cf. [Example 6.31](#).)

Theorem 6.38 *Let X_1, X_2, \dots, X_n be compact spaces. Then the product space $X_1 \times X_2 \times \dots \times X_n$ is compact.*


Proof. We prove the statement for the product of two compact spaces. The general result then follows by an inductive argument.

Let X and Y be compact spaces. Let \mathcal{A} be an open cover of $X \times Y$. We must show that there is a finite subcover \mathcal{A}' of \mathcal{A} . For each $x \in X$, $\{x\} \times Y$ is compact in $X \times Y$ as it is homeomorphic to Y which is assumed to be compact. Thus there is a finite subcollection \mathcal{A}_x of \mathcal{A} that covers $\{x\} \times Y$. Let $U_x = \bigcup_{A_x \in \mathcal{A}_x} A_x$. Then U_x is open in $X \times Y$ and contains $\{x\} \times Y$. Thus by [Lemma 6.37](#) for each $x \in X$ there is a neighborhood $W_x \subseteq X$ such that $x \in W_x$ and $W_x \times Y \subseteq U_x$. Furthermore, \mathcal{A}_x covers $W_x \times Y$.

Now let $x \in X$ vary. The collection $\{W_x\}_{x \in X}$ is then an open cover of X . Since X is compact, there must be a finite subcover $\{W_{x_1}, W_{x_2}, \dots, W_{x_n}\}$ of $\{W_x\}_{x \in X}$. For each $1 \leq i \leq n$ the subspace $W_{x_i} \times Y$ is covered by the finite subcollection \mathcal{A}_{x_i} of \mathcal{A} . Hence,

$$X \times Y = \bigcup_{i=1}^n W_{x_i} \times Y$$

is covered by the subcollection $\mathcal{A}' = \bigcup_{i=1}^n \mathcal{A}_{x_i}$ of \mathcal{A} . Thus $X \times Y$ is compact. □

The theorem can be extended to hold for arbitrary products of compact spaces if we equip the product with the product topology. This is known as *Tychonoff's theorem*. It is a deep result whose proof uses several original ideas. If we equip the product with the box topology the statement is no longer true. 

We have already seen that the real line (with the standard topology) is not compact, cf. [Example 6.31](#). The next theorem states that all closed intervals of the real line are compact.

Theorem 6.39 *Let \mathbb{R} be the set of real numbers equipped with the standard topology. Then every closed interval $[a, b]$ in \mathbb{R} is compact.*

Proof. Let $\mathcal{A} = \{U_\lambda\}_{\lambda \in \Lambda}$ be a cover of $[a, b]$ by open subsets of \mathbb{R} , and let

$$S = \{x \in [a, b] \mid [a, x] \text{ is covered by a finite subcollection of } \mathcal{A}\}.$$

Note that S is bounded above by b . Since $a \in U_\lambda$ for some $\lambda \in \Lambda$, the singleton $\{U_\lambda\}$ is a finite subcollection of \mathcal{A} that covers $[a, a] = \{a\}$. Hence, S is non-empty and it is bounded above. Thus S has a least upper bound; $c = \sup S$. Clearly, $a \leq c \leq b$.

We will show that $c \in S$. The result follows if we can also show that $c = b$. Choose $\lambda' \in \Lambda$ with $c \in U_{\lambda'}$. Since $U_{\lambda'}$ is open in \mathbb{R} there is a real number $\epsilon > 0$ such that $(c - \epsilon, c + \epsilon) \subseteq U_{\lambda'}$. Hence, there is an $x \in S$ such that $c - \epsilon < x$. So by definition of S there is a finite subcollection $\{U_{\lambda_1}, U_{\lambda_2}, \dots, U_{\lambda_n}\}$ of \mathcal{A} such that $[a, x] \subseteq \bigcup_{i=1}^n U_{\lambda_i}$. Furthermore, $[x, c] \subseteq U_{\lambda'}$. Thus $[a, c] = [a, x] \cup [x, c]$ is covered by the finite subcollection $\{U_{\lambda_1}, U_{\lambda_2}, \dots, U_{\lambda_n}, U_{\lambda'}\}$ of \mathcal{A} . Hence, $c \in S$.

We now show that $c = b$. Assume that $c < b$. Then there must be a $y \in [a, b]$ such that $c < y < c + \epsilon$. Thus $[a, y]$ is covered by the subcollection $\{U_{\lambda_1}, U_{\lambda_2}, \dots, U_{\lambda_n}, U_{\lambda'}\}$ of \mathcal{A} such that $y \in S$. This is a contradiction of the fact that c is an upper bound. Hence, $c = b$. \square

In order to state and prove the Heine–Borel theorem we need the following definition.

Definition 6.40 (Bounded subsets) Let (X, d) be a metric space, and let A be a subset of X . We say that A is *bounded* if there is an $M \in \mathbb{R}$ such that $d(a_1, a_2) \leq M$ for all $a_1, a_2 \in A$.

Equivalently, we may say that a subset A of a metric space (X, d) is *bounded* if there is a $K \in \mathbb{R}$ and $x \in X$ such that $d(a, x) \leq K$ for all $a \in A$. In particular, this means that a subset of \mathbb{R}^n equipped with the Euclidean metric is bounded if it is contained in some closed ball of finite radius centered at the origin.

Theorem 6.41 (Heine–Borel) Let \mathbb{R}^n be given the (Euclidean) metric topology and the Euclidean metric. A subset A of \mathbb{R}^n is compact if and only if it is closed and bounded.

Proof. Assume that A is compact. By [Theorem 6.21](#), \mathbb{R}^n is Hausdorff, and so, by [Theorem 6.35](#) A is closed in \mathbb{R}^n . We must show that A is also bounded. Let $\mathcal{A} = \{B(0; n) \mid n \in \mathbb{Z}_+\}$, i.e., a collection of open balls centered at the origin in \mathbb{R}^n . Then \mathcal{A} is a cover of A by open subsets of \mathbb{R}^n . Since A is compact there must be a finite subcollection of \mathcal{A} that covers A . Thus there is an $N \in \mathbb{Z}_+$ such that $A \subseteq B(0; N)$. Hence, for all $a_1, a_2 \in A$ we have $d(a_1, a_2) < 2N$. Thus A is bounded.

Now assume that A is bounded and closed in \mathbb{R}^n . Let $p = (p_1, p_2, \dots, p_n) \in A$. Since A is bounded there is an $M \in \mathbb{R}$ such that $d(a_1, a_2) \leq M$ for all $a_1, a_2 \in A$. Then A is contained in the product space

$$P = [p_1 - M, p_1 + M] \times [p_2 - M, p_2 + M] \times \cdots \times [p_n - M, p_n + M]$$

which by [Theorem 6.39](#) and [Theorem 6.38](#) is compact. Since A is closed in \mathbb{R}^n and a subset of P , it follows by extending [Theorem 6.34](#) to our setting that A is compact. Specifically, let \mathcal{C} be a cover of A by open subsets of \mathbb{R}^n . Since A is closed in \mathbb{R}^n , $A^c = \mathbb{R}^n \setminus A$ is open in \mathbb{R}^n . Thus

$$\mathcal{A} = \mathcal{C} \cup \{A^c\}$$

is an open cover of \mathbb{R}^n , and thus it is also an open cover of P in the subspace topology. Since P is compact there must be a finite subcover of \mathcal{A} that covers P . This implies that there is a finite subcover of \mathcal{C} that covers A . Thus A is compact. \square

An immediate consequence of [Theorem 6.41](#) is that S^n considered as a subspace of \mathbb{R}^{n+1} is compact, and hence, that the torus $T^2 = S^1 \times S^1$ is compact.

We end this section with a proof of the generalized extreme value theorem.

Theorem 6.42 (Generalized extreme value theorem) Let X be a compact space, and let $f: X \rightarrow \mathbb{R}$ be a continuous map where \mathbb{R} is given the standard topology. Then there are $m, M \in X$ such that

$$f(m) \leq f(x) \leq f(M)$$

for all $x \in X$.

Proof. By Theorem 6.36, $f(X)$ is compact. We must show that $f(X)$ contains its supremum and its infimum. If it does, then by setting $f(m) = \inf f(X)$ and $f(M) = \sup f(X)$ the theorem follows.

We prove that $f(X)$ contains its supremum. The proof for the infimum is similar. Since $f(X)$ is compact, it is closed and bounded by Theorem 6.41. In particular, $f(X)$ is bounded above. Hence, the set $f(X)$ has a least upper bound; $s = \sup f(X)$. Thus $p \leq s$ for all $p \in f(X)$.

We must show that $s \in f(X)$. Assume that $s \notin f(X)$. Since $f(X)$ is closed, i.e., $f(X)^c = \mathbb{R} \setminus f(X)$ is open, it follows that there is a real number $\epsilon > 0$ such that

$$(s - \epsilon, s + \epsilon) \cap f(X) = \emptyset.$$

Hence, there is a real number y such that y is an upper bound of $f(X)$ and $s - \epsilon < y < s$. This is a contradiction to the fact that s is the least upper bound of $f(X)$. Hence, $s = \sup f(X) \in f(X)$. \square

6.4 Exercises

Exercise 6.1 Let X be a topological space. Show that X is connected if and only if every continuous map from X to a discrete space consisting of at least two points is constant.

Exercise 6.2 Let X be a topological space, and let $A \subseteq B \subseteq \bar{A}$ be subspaces of X .

- (a) Show that if A is connected then so is B .
- (b) Show that $[a, b)$, $(a, b]$, $[a, b]$, $(-\infty, b]$ and $[a, \infty)$ are all connected spaces when considered as subspaces of \mathbb{R} with the standard topology.

Exercise 6.3 Let X be a topological space, and consider $I = [0, 1]$ as a subspace of \mathbb{R} where \mathbb{R} is given the standard topology. Furthermore, let the cone on X be quotient space $CX = X \times I / \sim$, where \sim is the equivalence relation on the product space $X \times I$ given by $(x, 0) \sim (x', 0)$ for all $x, x' \in X$. Show that CX is path connected.

Exercise 6.4 Let X be a Hausdorff space, and let A be a subspace of X . Show that A is Hausdorff.

Exercise 6.5 Let X be an infinite set with the cofinite topology.

- (a) Show that X is compact.
- (b) Show that any subset of X is compact.

Exercise 6.6 Let X be a compact space, and let Y be a Hausdorff space. Furthermore, let $f: X \rightarrow Y$ be a continuous map.

- (a) Show that f is a closed map.
- (b) Show that if f is a surjective continuous map, then f is a quotient map.
- (c) Show that if f is a bijective continuous map, then f is a homeomorphism.
- (d) Show that f is *proper*, i.e., for each subset K of Y that is compact the preimage $f^{-1}(K)$ is compact.

Exercise 6.7 Show that the surface of the cube centered at the origin,

$$C = \{(x, y, z) \in \mathbb{R}^3 \mid \max\{|x|, |y|, |z|\} = 1\},$$

and the 2-sphere,

$$S^2 = \{(x, y, z) \in \mathbb{R}^3 \mid \sqrt{x^2 + y^2 + z^2} = 1\},$$

are homeomorphic where they are both considered to be subspaces of \mathbb{R}^3 with the standard topology.

Exercise 6.8 Let X be a topological space, and let A_1, A_2, \dots, A_n be subspaces of X each of which is compact. Show that

$$\bigcup_{i=1}^n A_i$$

is compact.

Bibliography

- [1] C.C. Adams and R.D. Franzosa. *Introduction to Topology: Pure and Applied*. Pearson Prentice Hall, Upper Saddle River, NJ, 2008.
- [2] Harry Furstenberg. On the infinitude of primes. *Amer. Math. Monthly*, 62:353, 1955.
- [3] J.R. Munkres. *Topology*. Prentice Hall, Inc., Upper Saddle River, NJ, 2000. Second edition.